

CONSULTANTS:

CERTIFICATION:

PROGRESS DRAWINGS
NOT FOR CONSTRUCTION



ELECTRIC PICKLE ROSEVILLE

340 Conference Center Drive
Roseville, CA 95678
38.778866, -121.270030
Contact: Paul Frederick
12101 S. Creshaw Blvd #400
Hawthorne, CA 90250
310-331-8232
paul@electricpickle.com

Date: 2023/06/18
Project No: 10503

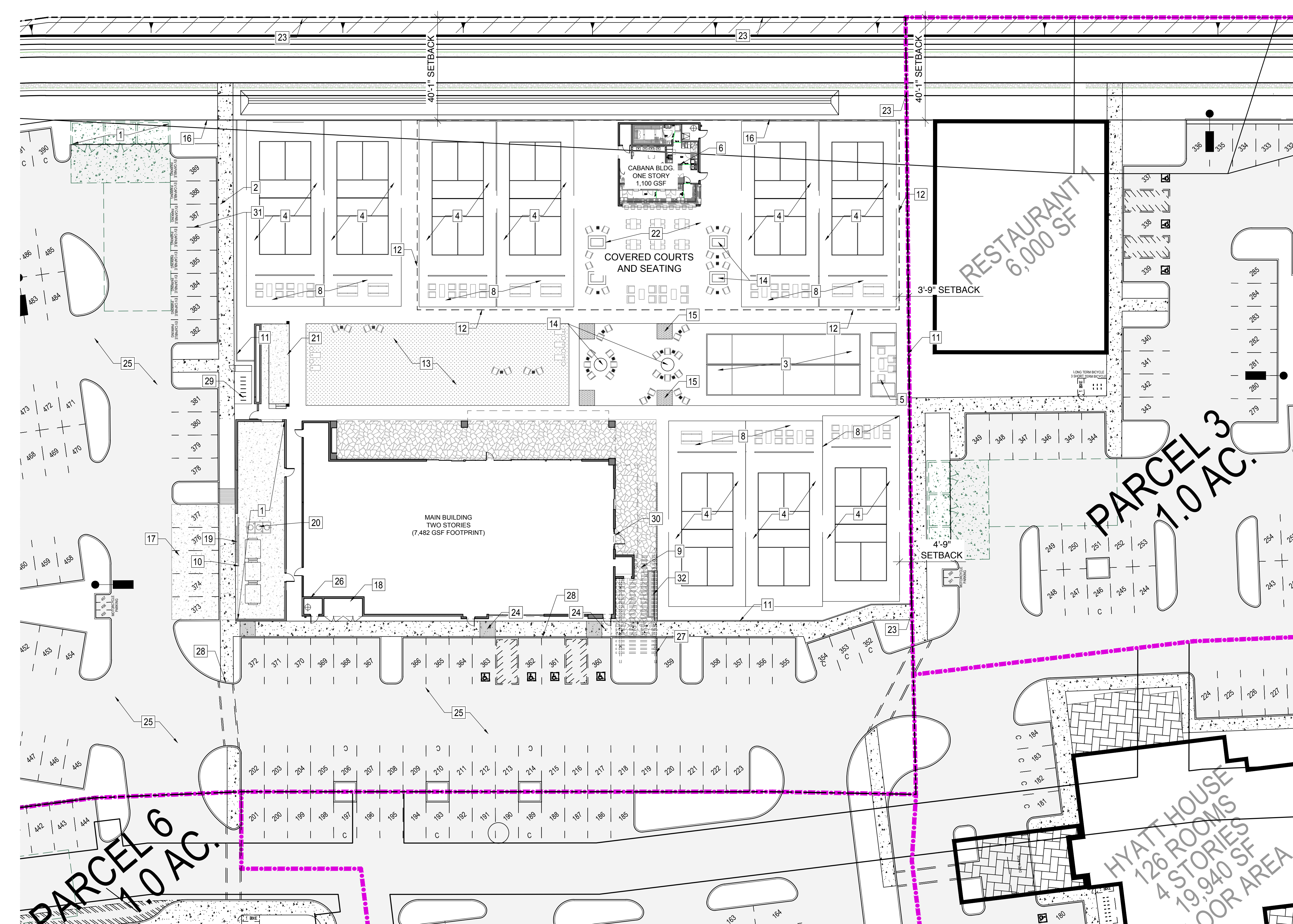
Drawn By: MWR
Checked By: JED

Revision: DR Comments 01
Date: 8/18/23

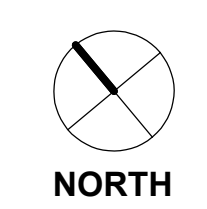
G100

SITE PLAN

SITE PLAN KEYNOTES	
1	SERVICE YARD ENCLOSURE (MASONRY WALLS)
2	PARKING LOT LIGHTING (SEE SHEET G800)
3	BACK YARD BOCCO COURT
4	PICKLE BALL COURT
5	COVERED CABANA
6	COVERED OUTDOOR BAR
7	RESTROOMS / STORAGE BUILDING
8	OUTDOOR SEATING AREA
9	COVERED PERGOLA/ENTRY
10	GATES
11	DECORATIVE SITE FENCE (8'-0" H.) (SEE ELEVATIONS) W.I. or ENGINEERED WOOD
12	LINE OF OPEN AIR SHADE STRUCTURE ABOVE (SEE ELEVATIONS)
13	SYNTHETIC TURF
14	FIRE PIT SEATING AREA
15	RAISED PLANTER
16	LINE OF EASEMENT (SEE CIVIL)
17	CONCRETE APRON / PAVEMENT
18	SES / ELECTRICAL SERVICE
19	CONT. TRENCH DRAIN WITH SAND/OIL INTERCEPTOR
20	GREASE INTERCEPTOR
21	STAGE
22	OUTDOOR LOUNGE AREA
23	PROPERTY LINE
24	ADA RAMP (1:12 MAX)
25	PARKING
26	FIRE RISER ROOM / FDC / FIRE CONTROL ROOM
27	TRELLIS OVERHANG (SEE ELEVATIONS)
28	FLUSH CURB FOR ADA
29	BICYCLE PARKING
30	MAIN BUILDING ENTRANCE
31	EV CAPABLE PARKING
32	WATER FEATURE - SEE DETAILS



1 OVERALL SITE PLAN
1"=20'-0"



*For additional information and project requirements and instructions visit www.brickandwest.com/build

THIS DRAWING IS PART OF A SET OF WORKING DRAWINGS. THE INFORMATION CONTAINED ON THIS DRAWING MUST BE COORDINATED WITH THE BALANCE OF THE DRAWINGS, AND CANNOT BE TAKEN AS A STAND-ALONE INSTRUCTION. ALL GENERAL NOTES AND SPECIFICATIONS APPLY TO EVERY SHEET IN THIS SET.

TRACKING #: _____
PLAN CHECK #: _____

CONSULTANTS:

CERTIFICATION:

PROGRESS DRAWINGS
NOT FOR CONSTRUCTION



ELECTRIC PICKLE ROSEVILLE

340 Conference Center Drive
CA 95720
38 778866 - TEL 270030
Contact: Paul Frederick
12101 S. Creshaw Blvd #400
Hawthorne, CA 90250
310-331-8232
paul@electricpickles.com

2023/06/18
10503

MAR

JED

Date
Project No.
Drawn By
Checked By

Revision Date
DR Comments 01 8/18/23

A100

FIRST FLOOR OVERALL
MAIN BUILDING

TRACKING #:
PLAN CHECK #:

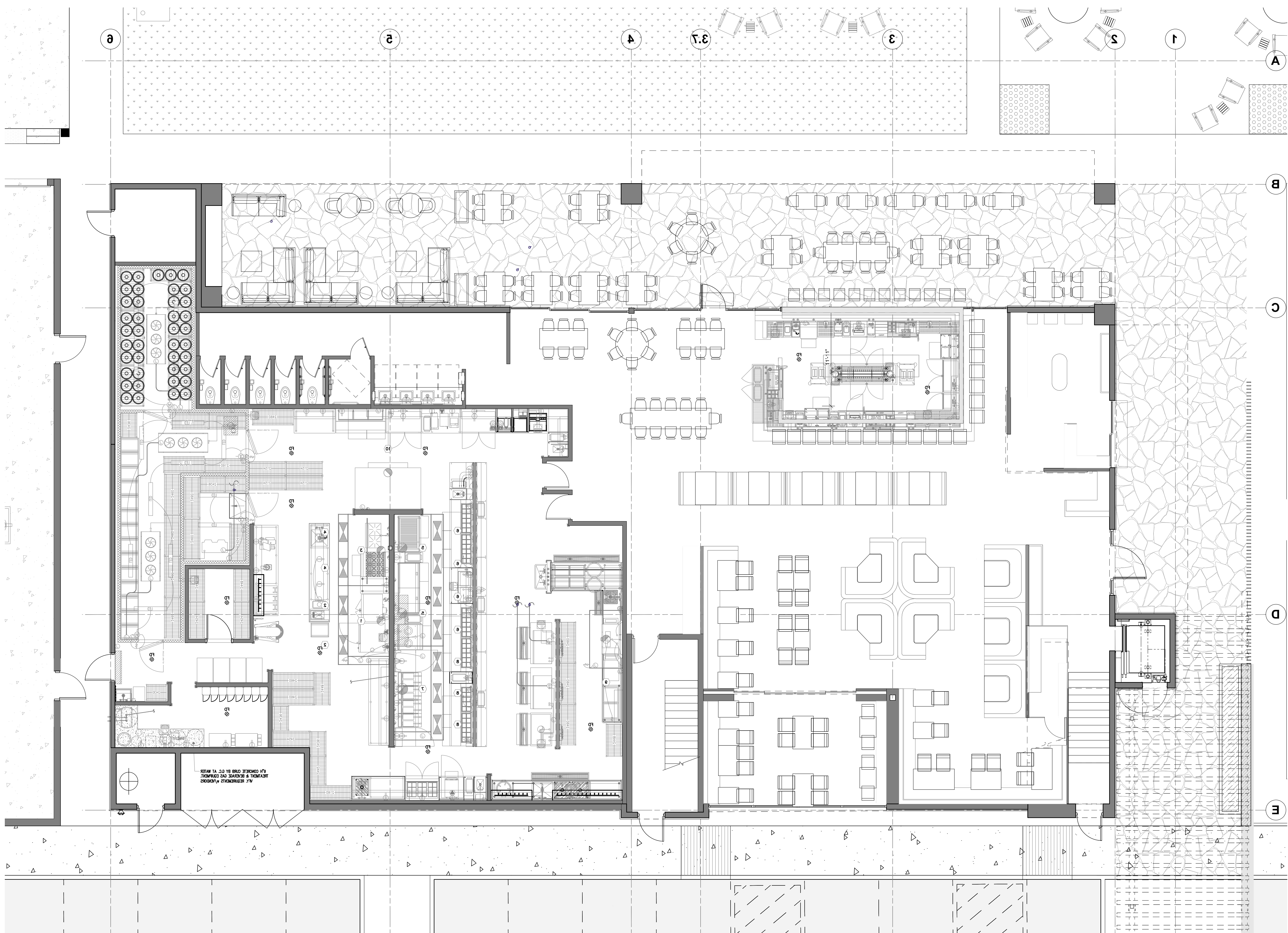
THIS DRAWING IS PART OF A SET OF WORKING DRAWINGS. THE INFORMATION CONTAINED ON THIS DRAWING MUST BE COORDINATED WITH THE BALANCE OF THE DRAWINGS, AND CANNOT BE TAKEN AS A STAND-ALONE INSTRUCTION. ALL GENERAL NOTES AND SPECIFICATIONS APPLY TO EVERY SHEET IN THIS SET.



NORTH



*For additional information and project requirements and instructions visit www.brickandwest.com/build



1 FIRST FLOOR PLAN - MAIN BUILDING
3/16" = 1'-0"

CONSULTANTS:

CERTIFICATION:

PROGRESS
DRAWINGS
NOT FOR
CONSTRUCTION



ELECTRIC PICKLE ROSEVILLE

340 Conference Center Drive
Roseville, CA 95747
38.778866, -121.270030
Contact: Paul Frederick
12101 S. Crenshaw Blvd. #400
Hawthorne, CA 90250
310-331-8232
paul@electricpickle.com

Date: 2023/06/18
Project No: 10503

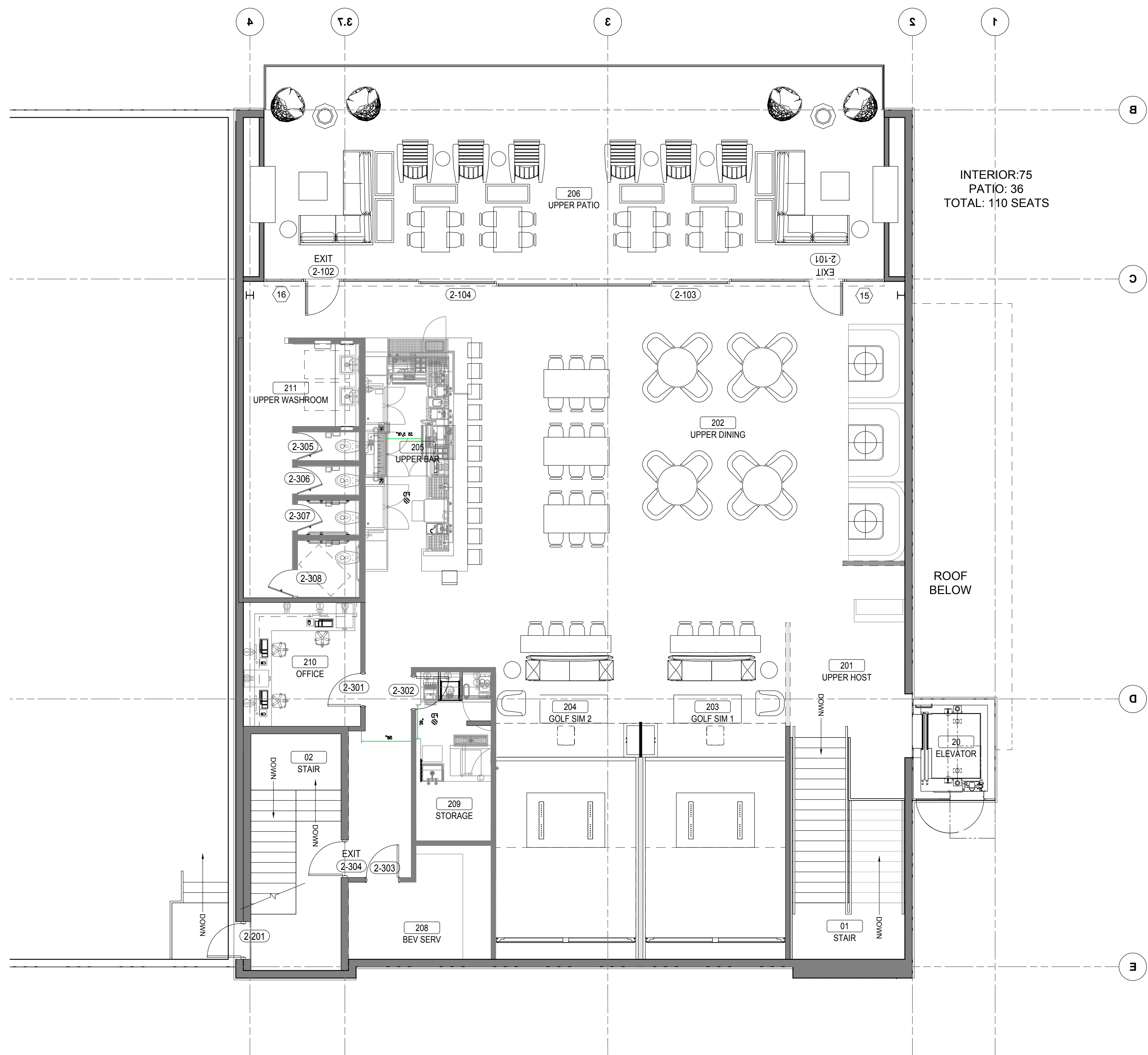
Drawn By: MMR
Checked By: JED

Revision	Date
DR Comments 01	8/18/23

A110

SECOND FLOOR
MAIN BUILDING

THIS DRAWING IS PART OF A SET OF WORKING DRAWINGS. THE INFORMATION CONTAINED ON THIS DRAWING MUST BE COORDINATED WITH THE BALANCE OF THE DRAWINGS, AND CANNOT BE TAKEN AS A STAND-ALONE INSTRUCTION. ALL GENERAL NOTES AND SPECIFICATIONS APPLY TO EVERY SHEET IN THIS SET.



1 SECOND FLOOR PLAN - MAIN BUILDING
3/16" = 1'-0"



CONSULTANTS:

CERTIFICATION:

**PROGRESS DRAWINGS
NOT FOR CONSTRUCTION**



ELECTRIC PICKLE ROSEVILLE

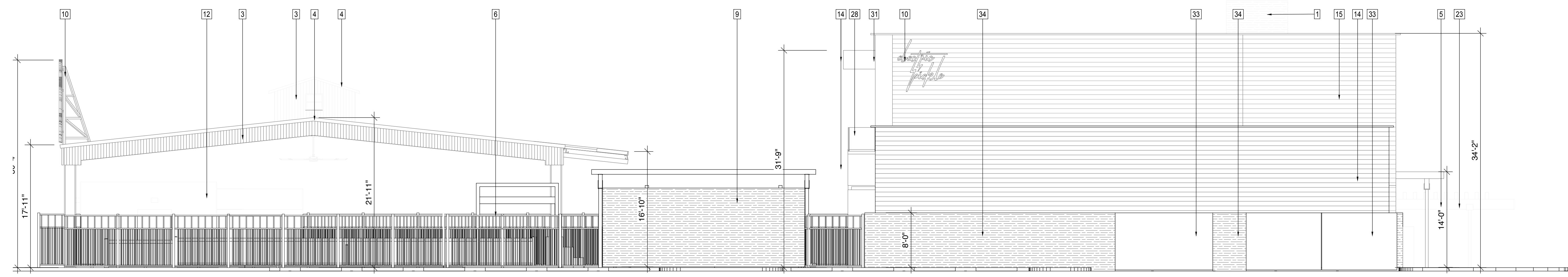
340 Conference Center Drive
Roseville, CA 95678
38.778866, -121.270030
Contact: Paul Frederick
12101 S. Crenshaw Blvd #400
Hawthorne, CA 90250
310.331.8232

Date	2023/06/18
Project No.	10503
Drawn By	MAR
Checked By	JED
Revision	
DR Comments	01 8/18/23

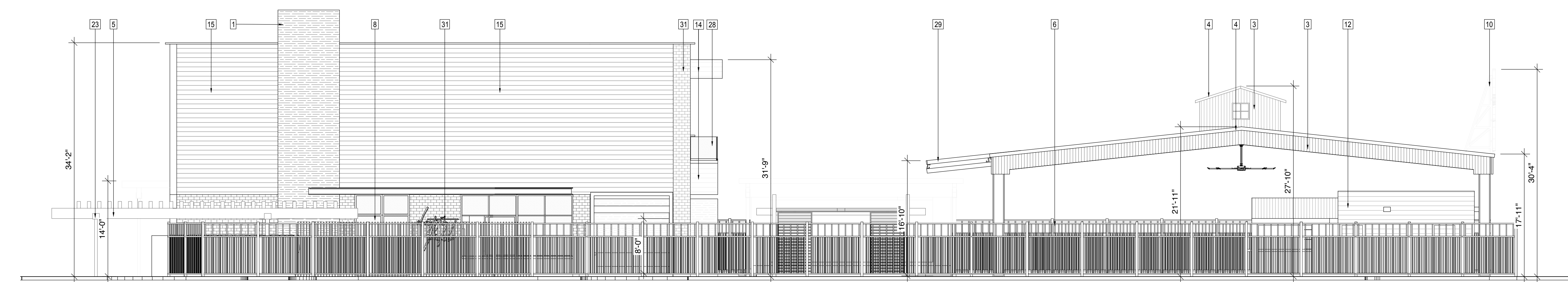
A202
BUILDING ELEVATIONS

MATERIAL AND FINISH SCHEDULE	
SEE SHEET A630 FOR ADDITIONAL DETAIL ON MATERIALS	
1	BOARD-FORMED CONCRETE (C)
2	STANDING SEAM METAL (DARK BRONZE) (A) WESTERN WAVE METAL RIGID WALL PANEL 'DARK BRONZE' 24 GA. MANUFACTURER: WESTERN STATES METAL ROOFING
3	STANDING SEAM METAL (SLATE GRAY) (B) WESTERN WAVE METAL RIGID WALL PANEL 'SLATE GRAY' 24 GA. MANUFACTURER: WESTERN STATES METAL ROOFING
4	STANDING SEAM METAL ROOF (B) WESTERN WAVE METAL RIGID ROOFING 'SLATE GRAY' 24 GA. MANUFACTURER: WESTERN STATES METAL ROOFING
5	GLUELAM WOOD SHADE TRELLIS (E)
6	8'-0" HIGH WROUGHT-IRON FENCE PAINTED PT-02 (D) PT-02 SHERWIN WILLIAMS 7061 'NIGHT OWL' SHERWIN WILLIAMS Pro Industrial Pro-Cryl Universal Primer with two coats of Pro Industrial Multi-Surface Acrylic Gloss
7	STEEL COLUMN (PAINTED PT-02) (D) PT-02 SHERWIN WILLIAMS 7061 'NIGHT OWL' SHERWIN WILLIAMS Pro Industrial Pro-Cryl Universal Primer with two coats of Pro Industrial Multi-Surface Acrylic Gloss
8	OPERABLE STORERFONT WINDOW SYSTEM. Western Windows dark bronze anodized with dial pane insulated high performance glass.
9	CIP WALL AT OUTDOOR STAGE (C)
10	SIGNAGE (BY SEPARATE PERMIT)
11	SES (PAINTED PT-01) (H) PT-01 SHERWIN WILLIAMS 9161 'DUSTBLU' SHERWIN WILLIAMS Pro Industrial Pro-Cryl Universal Primer with two coats of Pro Industrial Multi-Surface Acrylic Gloss
12	CABANA BUILDING (SEE ELEVATIONS)
13	FIXED STORERFONT WINDOW SYSTEM. Western Windows dark bronze anodized with dial pane insulated high performance glass.
14	HARIDE PLANK SIDING (J) HARDIE SIDING 'PEARL GRAY' JAMES HARDIE CEDARMILL SIDING 7.25" X 144" 6" EXPOSURE MANUFACTURER: JAMES HARDIE COMPANY

MATERIAL AND FINISH SCHEDULE	
SEE SHEET A630 FOR ADDITIONAL DETAIL ON MATERIALS	
15	HARIDE PLANK SIDING (F) HARDIE SIDING 'MIDNIGHT SCOT' JAMES HARDIE CEDARMILL SIDING 7.25" X 144" 6" EXPOSURE MANUFACTURER: JAMES HARDIE COMPANY
16	FDC
17	FIRE RISER ROOM/FIRE CONTROL ROOM
18	STEEL C CHANNEL (PT-02) (D) PT-02 SHERWIN WILLIAMS 7061 'NIGHT OWL' SHERWIN WILLIAMS Pro Industrial Pro-Cryl Universal Primer with two coats of Pro Industrial Multi-Surface Acrylic Gloss
19	GLUELAM WOOD BEAM (E)
20	TREX CLADDING (G) TREX TRANSCEND IN 'TIKI TORCH' 5.5" PLANK MANUFACTURER: TREX COMPANY, INC.
22	BAR WITH TILE BAR DIE WALL
23	PLATE STEEL SADDLE STRAP (PT-02) (D) PT-02 SHERWIN WILLIAMS 7061 'NIGHT OWL' SHERWIN WILLIAMS Pro Industrial Pro-Cryl Universal Primer with two coats of Pro Industrial Multi-Surface Acrylic Gloss
25	HOLLOW METAL DOOR (PAINTED PT-01) (H) PT-01 SHERWIN WILLIAMS 9161 'DUSTBLU' SHERWIN WILLIAMS Pro Industrial Pro-Cryl Universal Primer with two coats of Pro Industrial Multi-Surface Acrylic Gloss
26	STEEL BEAM (PAINTED PT-02) (D) PT-02 SHERWIN WILLIAMS 7061 'NIGHT OWL' SHERWIN WILLIAMS Pro Industrial Pro-Cryl Universal Primer with two coats of Pro Industrial Multi-Surface Acrylic Gloss
27	MECHANICAL UNITS (BEYOND) SCREENED BY PARAPET
28	CRL GLASS BALUSTRADE SYSTEM
29	PLAZIT 'POLYGAL' 'ICE' CORRUGATED POLYCARBONATE ROOFING (K)
30	STEEL KNIFE EGDE PARAPET CAP PAINTED PT-02 (D) PT-02 SHERWIN WILLIAMS 7061 'NIGHT OWL' SHERWIN WILLIAMS Pro Industrial Pro-Cryl Universal Primer with two coats of Pro Industrial Multi-Surface Acrylic Gloss
31	WHITE TUMBLER REAL BRICK VENEER. (I) Sandy Shore by General Shale
32	BLACK TUMBLER REAL BRICK VENEER. (I) Sandy Shore by General Shale Painted gloss black.
33	STEEL GATES (PAINTED PT-02) (D) PT-02
34	CIP CONCRETE WALL AT SERVICE YARD



2 MAIN BUILDING ELEVATION - WEST
1/8" = 1'-0"



1 PROJECT ELEVATION - EAST
1/8" = 1'-0"

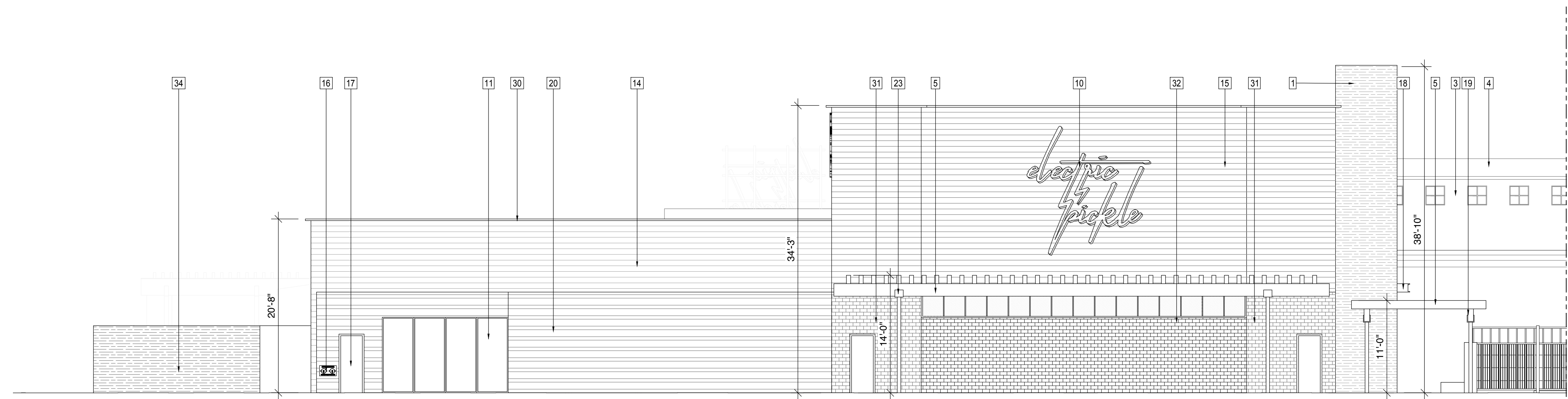
*For additional information and project requirements and instructions visit www.brickandwest.com/build



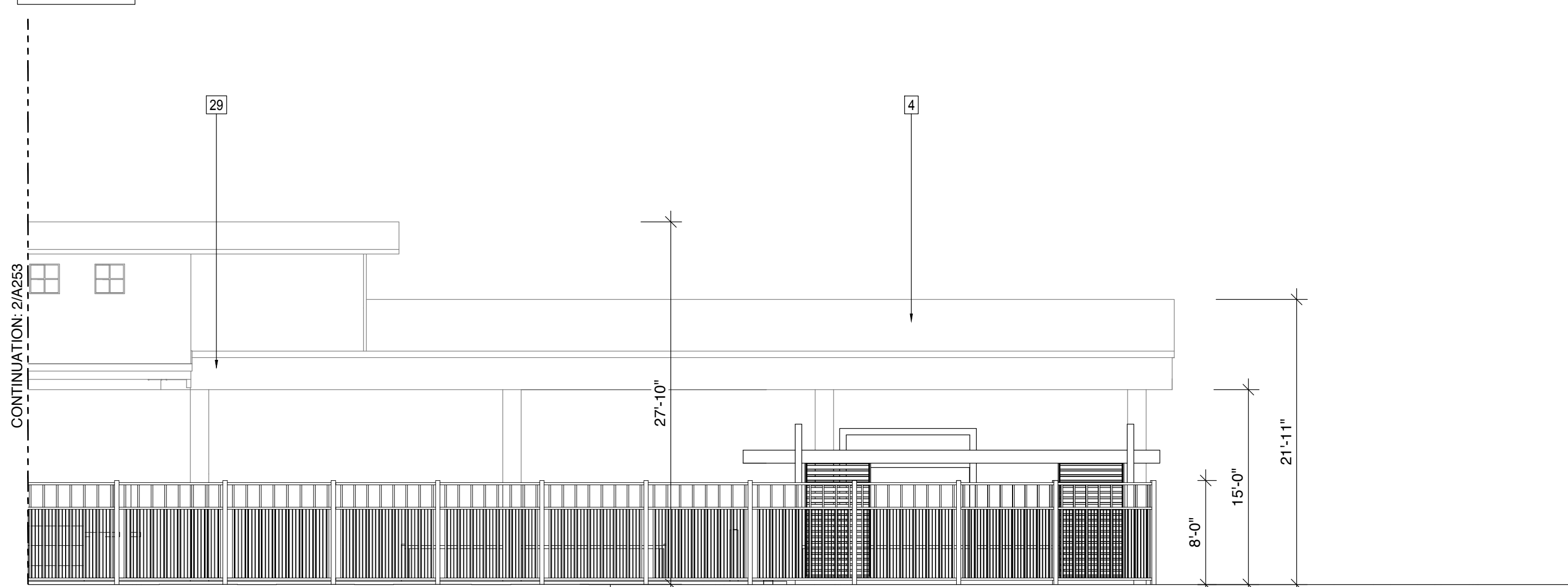
THIS DRAWING IS PART OF A SET OF WORKING DRAWINGS. THE INFORMATION CONTAINED ON THIS DRAWING MUST BE COORDINATED WITH THE BALANCE OF THE DRAWINGS, AND CANNOT BE TAKEN AS A STAND-ALONE INSTRUCTION. ALL GENERAL NOTES AND SPECIFICATIONS APPLY TO EVERY SHEET IN THIS SET.

MATERIAL AND FINISH SCHEDULE	
SEE SHEET A630 FOR ADDITIONAL DETAIL ON MATERIALS	
1	BOARD-FORMED CONCRETE (C)
2	STANDING SEAM METAL (DARK BRONZE) (A) WESTERN WAVE METAL RIGID WALL PANEL 'DARK BRONZE' 24 GA. MANUFACTURER: WESTERN STATES METAL ROOFING
3	STANDING SEAM METAL (SLATE GRAY) (B) WESTERN WAVE METAL RIGID WALL PANEL 'SLATE GRAY' 24 GA. MANUFACTURER: WESTERN STATES METAL ROOFING
4	STANDING SEAM METAL ROOF (B) WESTERN WAVE METAL RIGID ROOFING 'SLATE GRAY' 24 GA. MANUFACTURER: WESTERN STATES METAL ROOFING
5	GLUELAM WOOD SHADE TRELLIS (E)
6	8'-0" HIGH WROUGHT-IRON FENCE PAINTED PT-02 (D) PT-02 SHERWIN WILLIAMS 7061 'NIGHT OWL' SHERWIN WILLIAMS Pro Industrial Pro-Cryl Universal Primer with two coats of Pro Industrial Multi-Surface Acrylic Gloss
7	STEEL COLUMN (PAINTED PT-02) (D) PT-02 SHERWIN WILLIAMS 7061 'NIGHT OWL' SHERWIN WILLIAMS Pro Industrial Pro-Cryl Universal Primer with two coats of Pro Industrial Multi-Surface Acrylic Gloss
8	OPERABLE STORERFONT WINDOW SYSTEM. Western Windows dark bronze anodized with dial pane insulated high performance glass.
9	CIP WALL AT OUTDOOR STAGE (C)
10	SIGNAGE (BY SEPARATE PERMIT)
11	SES (PAINTED PT-01) (H) PT-01 SHERWIN WILLIAMS 9161 'DUSTBLU' SHERWIN WILLIAMS Pro Industrial Pro-Cryl Universal Primer with two coats of Pro Industrial Multi-Surface Acrylic Gloss
12	CABANA BUILDING (SEE ELEVATIONS)
13	FIXED STORERFONT WINDOW SYSTEM. Western Windows dark bronze anodized with dial pane insulated high performance glass.
14	HARIDE PLANK SIDING (J) HARDIE SIDING 'PEARL GRAY' JAMES HARDIE CEDARMILL SIDING 7.25" X 144" 6" EXPOSURE MANUFACTURER: JAMES HARDIE COMPANY

MATERIAL AND FINISH SCHEDULE	
SEE SHEET A630 FOR ADDITIONAL DETAIL ON MATERIALS	
15	HARIDE PLANK SIDING (F) HARDIE SIDING 'MIDNIGHT SCOT' JAMES HARDIE CEDARMILL SIDING 7.25" X 144" 6" EXPOSURE MANUFACTURER: JAMES HARDIE COMPANY
16	FDC
17	FIRE RISER ROOM/FIRE CONTROL ROOM
18	STEEL C CHANNEL (PT-02) (D) PT-02 SHERWIN WILLIAMS 7061 'NIGHT OWL' SHERWIN WILLIAMS Pro Industrial Pro-Cryl Universal Primer with two coats of Pro Industrial Multi-Surface Acrylic Gloss
19	GLUELAM WOOD BEAM (E)
20	TREX CLADDING (G) TREX TRANSCEND IN 'TIKI TORCH' 5.5" PLANK MANUFACTURER: TREX COMPANY, INC.
22	BAR WITH TILE BAR DIE WALL
23	PLATE STEEL SADDLE STRAP (PT-02) (D) PT-02 SHERWIN WILLIAMS 7061 'NIGHT OWL' SHERWIN WILLIAMS Pro Industrial Pro-Cryl Universal Primer with two coats of Pro Industrial Multi-Surface Acrylic Gloss
25	HOLLOW METAL DOOR (PAINTED PT-01) (H) PT-01 SHERWIN WILLIAMS 9161 'DUSTBLU' SHERWIN WILLIAMS Pro Industrial Pro-Cryl Universal Primer with two coats of Pro Industrial Multi-Surface Acrylic Gloss
26	STEEL BEAM (PAINTED PT-02) (D) PT-02 SHERWIN WILLIAMS 7061 'NIGHT OWL' SHERWIN WILLIAMS Pro Industrial Pro-Cryl Universal Primer with two coats of Pro Industrial Multi-Surface Acrylic Gloss
27	MECHANICAL UNITS (BEYOND) SCREENED BY PARAPET
28	CRL GLASS BALUSTRADE SYSTEM
29	PLAZIT 'POLY GAL' 'ICE' CORRUGATED POLYCARBONATE ROOFING (K)
30	STEEL KNIFE EGDE PARAPET CAP PAINTED PT-02 (D) PT-02 SHERWIN WILLIAMS 7061 'NIGHT OWL' SHERWIN WILLIAMS Pro Industrial Pro-Cryl Universal Primer with two coats of Pro Industrial Multi-Surface Acrylic Gloss
31	WHITE TUMBLE REAL BRICK VENEER. (I) Sandy Shore by General Shale
32	BLACK TUMBLE REAL BRICK VENEER. (I) Sandy Shore by General Shale Painted gloss black.
33	STEEL GATES (PAINTED PT-02) (D) PT-02
34	CIP CONCRETE WALL AT SERVICE YARD



2 PROJECT ELEVATION - PARTIAL - SOUTH
1/8" = 1'-0"

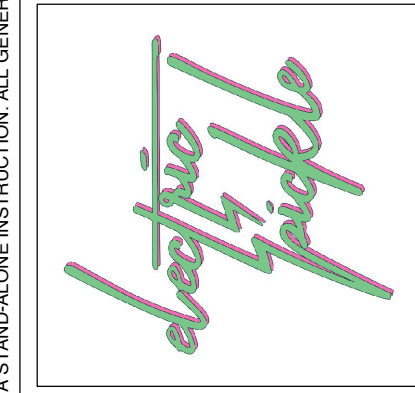


1 PROJECT ELEVATION - PARTIAL - SOUTH
1/8" = 1'-0"

CONSULTANTS:

CERTIFICATION:

PROGRESS DRAWINGS
NOT FOR CONSTRUCTION



ELECTRIC PICKLE ROSEVILLE
340 Conference Center Drive
Roseville, CA 95678
38-778866 - 121270030
Contact: Paul Frederick
12101 S. Crenshaw Blvd #400
Hawthorne, CA 90250
paul@electricpickledesign.com
310-331-8232

2023/08/18
10503
MFR
JED

Date
Project No.
Drawn By
Checked By

Revision Date
DR Comments 01 8/18/23

A203
MAIN BUILDING
ELEVATIONS

*For additional information and project requirements and instructions visit www.brickandwest.com/build



THIS DRAWING IS PART OF A SET OF WORKING DRAWINGS. THE INFORMATION CONTAINED ON THIS DRAWING MUST BE COORDINATED WITH THE BALANCE OF THE DRAWINGS, AND CANNOT BE TAKEN AS A STAND-ALONE INSTRUCTION. ALL GENERAL NOTES AND SPECIFICATIONS APPLY TO EVERY SHEET IN THIS SET.

CONSULTANTS:

CERTIFICATION:

**PROGRESS DRAWINGS
NOT FOR CONSTRUCTION**



ELECTRIC PICKLE ROSEVILLE

340 Conference Center Drive
Roseville, CA 95678
38778866 - Tel 270030
Contact: Paul Frederick
12101 S. Crenshaw Blvd #400
Hawthorne, CA 90250
paul@electricpickle.com
310-331-8232

Date: 2023/06/18
Project No: 10503

Drawn By: MMR

Checked By: JED

Revision: DR Comments 01

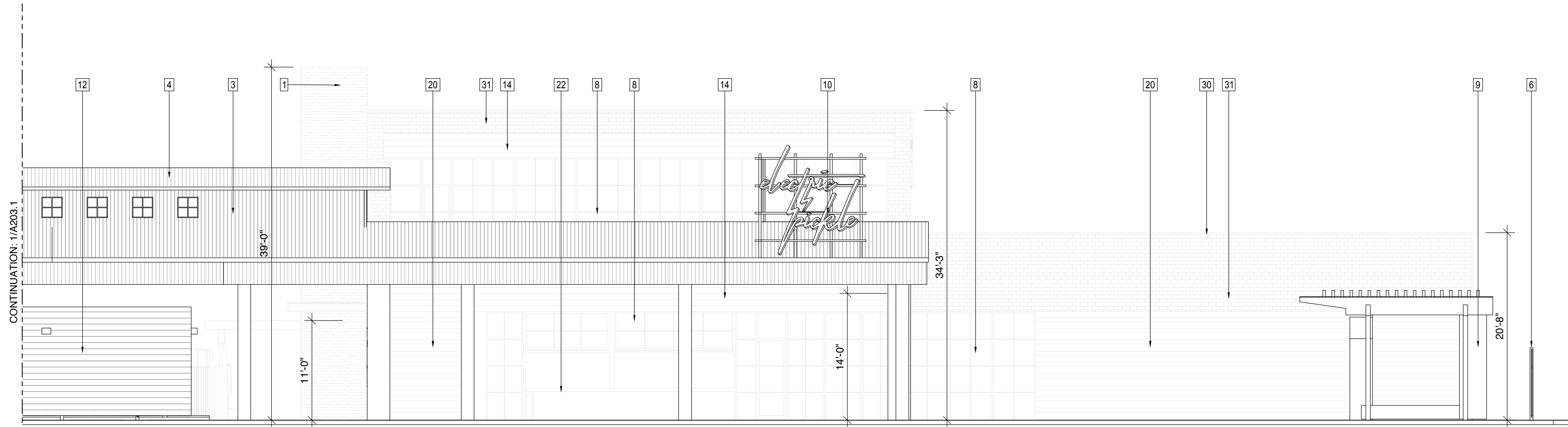
Date: 8/18/23

A203.1

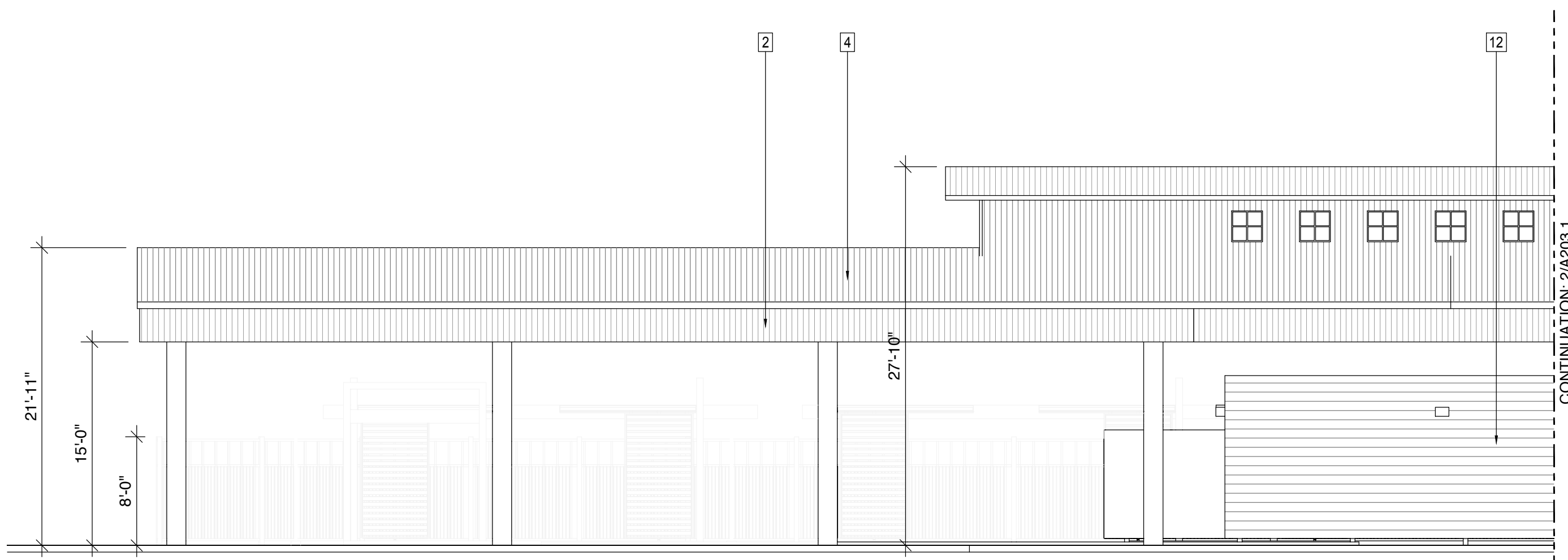
MAIN BUILDING
ELEVATIONS

MATERIAL AND FINISH SCHEDULE	
SEE SHEET A630 FOR ADDITIONAL DETAIL ON MATERIALS	
1	BOARD-FORMED CONCRETE (C)
2	STANDING SEAM METAL (DARK BRONZE) (A) WESTERN WAVE METAL RIGID WALL PANEL 'DARK BRONZE' 24 GA. MANUFACTURER: WESTERN STATES METAL ROOFING
3	STANDING SEAM METAL (SLATE GRAY) (B) WESTERN WAVE METAL RIGID WALL PANEL 'SLATE GRAY' 24 GA. MANUFACTURER: WESTERN STATES METAL ROOFING
4	STANDING SEAM METAL ROOF (B) WESTERN WAVE METAL RIGID ROOFING 'SLATE GRAY' 24 GA. MANUFACTURER: WESTERN STATES METAL ROOFING
5	GLUELAM WOOD SHADE TRELLIS (E)
6	8'-0" HIGH WROUGHT-IRON FENCE PAINTED PT-02 (D) PT-02 SHERWIN WILLIAMS 7061 'NIGHT OWL' SHERWIN WILLIAMS Pro Industrial Pro-Cryl Universal Primer with two coats of Pro Industrial Multi-Surface Acrylic Gloss
7	STEEL COLUMN (PAINTED PT-02) (D) PT-02 SHERWIN WILLIAMS 7061 'NIGHT OWL' SHERWIN WILLIAMS Pro Industrial Pro-Cryl Universal Primer with two coats of Pro Industrial Multi-Surface Acrylic Gloss
8	OPERABLE STORERFONT WINDOW SYSTEM. Western Windows dark bronze anodized with dial pane insulated high performance glass.
9	CIP WALL AT OUTDOOR STAGE (C)
10	SIGNAGE (BY SEPARATE PERMIT)
11	SES (PAINTED PT-01) (H) PT-01 SHERWIN WILLIAMS 9161 'DUSTBLU' SHERWIN WILLIAMS Pro Industrial Pro-Cryl Universal Primer with two coats of Pro Industrial Multi-Surface Acrylic Gloss
12	CABANA BUILDING (SEE ELEVATIONS)
13	FIXED STORERFONT WINDOW SYSTEM. Western Windows dark bronze anodized with dial pane insulated high performance glass.
14	HARIDE PLANK SIDING (J) HARDIE SIDING 'PEARL GRAY' JAMES HARDIE CEDARMILL SIDING 7.25" X 144" 6" EXPOSURE MANUFACTURER: JAMES HARDIE COMPANY

MATERIAL AND FINISH SCHEDULE	
SEE SHEET A630 FOR ADDITIONAL DETAIL ON MATERIALS	
15	HARIDE PLANK SIDING (F) HARDIE SIDING 'MIDNIGHT SCOT' JAMES HARDIE CEDARMILL SIDING 7.25" X 144" 6" EXPOSURE MANUFACTURER: JAMES HARDIE COMPANY
16	FDC
17	FIRE RISER ROOM
18	STEEL C CHANNEL (PT-02) (D) PT-02 SHERWIN WILLIAMS 7061 'NIGHT OWL' SHERWIN WILLIAMS Pro Industrial Pro-Cryl Universal Primer with two coats of Pro Industrial Multi-Surface Acrylic Gloss
19	GLUELAM WOOD BEAM (E)
20	TREX CLADDING (G) TREX TRANSCEND IN 'TIKI TORCH' 5.5" PLANK MANUFACTURER: TREX COMPANY, INC.
22	BAR WITH TILE BAR DIE WALL
23	PLATE STEEL SADDLE STRAP (PT-02) (D) PT-02 SHERWIN WILLIAMS 7061 'NIGHT OWL' SHERWIN WILLIAMS Pro Industrial Pro-Cryl Universal Primer with two coats of Pro Industrial Multi-Surface Acrylic Gloss
25	HOLLOW METAL DOOR (PAINTED PT-01) (H) PT-01 SHERWIN WILLIAMS 9161 'DUSTBLU' SHERWIN WILLIAMS Pro Industrial Pro-Cryl Universal Primer with two coats of Pro Industrial Multi-Surface Acrylic Gloss
26	STEEL BEAM (PAINTED PT-02) (D) PT-02 SHERWIN WILLIAMS 7061 'NIGHT OWL' SHERWIN WILLIAMS Pro Industrial Pro-Cryl Universal Primer with two coats of Pro Industrial Multi-Surface Acrylic Gloss
27	MECHANICAL UNITS (BEYOND) SCREENED BY PARAPET
28	CRL GLASS BALUSTRADE SYSTEM
29	PLAZIT 'POLY GAL' 'ICE' CORRUGATED POLYCARBONATE ROOFING (K)
30	STEEL KNIFE EGDE PARAPET CAP PAINTED PT-02 (D) PT-02 SHERWIN WILLIAMS 7061 'NIGHT OWL' SHERWIN WILLIAMS Pro Industrial Pro-Cryl Universal Primer with two coats of Pro Industrial Multi-Surface Acrylic Gloss
31	WHITE TUMBLER REAL BRICK VENEER. (I) Sandy Shore by General Shale
32	BLACK TUMBLER REAL BRICK VENEER. (I) Sandy Shore by General Shale Painted gloss black.



2 PROJECT ELEVATION - PARTIAL - NORTH
1/8" = 1'-0"



1 PROJECT ELEVATION - PARTIAL - NORTH
1/8" = 1'-0"

THIS DRAWING IS PART OF A SET OF WORKING DRAWINGS. THE INFORMATION CONTAINED ON THIS DRAWING MUST BE COORDINATED WITH THE BALANCE OF THE DRAWINGS, AND CANNOT BE TAKEN AS A STAND-ALONE INSTRUCTION. ALL GENERAL NOTES AND SPECIFICATIONS APPLY TO EVERY SHEET IN THIS SET.

*For additional information and project requirements and instructions visit www.brickandwest.com/build



MATERIAL AND FINISH SCHEDULE	
SEE SHEET A630 FOR ADDITIONAL DETAIL ON MATERIALS	
1	BOARD-FORMED CONCRETE (C)
2	STANDING SEAM METAL (DARK BRONZE) (A) WESTERN WAVE METAL RIGID WALL PANEL 'DARK BRONZE' 24 GA. MANUFACTURER: WESTERN STATES METAL ROOFING
3	STANDING SEAM METAL (SLATE GRAY) (B) WESTERN WAVE METAL RIGID WALL PANEL 'SLATE GRAY' 24 GA. MANUFACTURER: WESTERN STATES METAL ROOFING
4	STANDING SEAM METAL ROOF (B) WESTERN WAVE METAL RIGID ROOFING 'SLATE GRAY' 24 GA. MANUFACTURER: WESTERN STATES METAL ROOFING
5	GLUELAM WOOD SHADE TRELIS (E)
6	8'-0" HIGH WROUGHT-IRON FENCE PAINTED PT-02 (D) PT-02 SHERWIN WILLIAMS 7061 'NIGHT OWL' SHERWIN WILLIAMS Pro Industrial Pro-Cryl Universal Primer with two coats of Pro Industrial Multi-Surface Acrylic Gloss
7	STEEL COLUMN (PAINTED PT-02) (D) PT-02 SHERWIN WILLIAMS 7061 'NIGHT OWL' SHERWIN WILLIAMS Pro Industrial Pro-Cryl Universal Primer with two coats of Pro Industrial Multi-Surface Acrylic Gloss
8	OPERABLE STORERFONT WINDOW SYSTEM. Western Windows dark bronze anodized with dial pane insulated high performance glass.
9	CIP WALL AT OUTDOOR STAGE (C)
10	SIGNAGE (BY SEPARATE PERMIT)
11	SES (PAINTED PT-01) (H) PT-01 SHERWIN WILLIAMS 9161 'DUSTBLU' SHERWIN WILLIAMS Pro Industrial Pro-Cryl Universal Primer with two coats of Pro Industrial Multi-Surface Acrylic Gloss
12	CABANA BUILDING (SEE ELEVATIONS)
13	FIXED STORERFONT WINDOW SYSTEM. Western Windows dark bronze anodized with dial pane insulated high performance glass.
14	HARIDE PLANK SIDING (J) HARDIE SIDING 'PEARL GRAY' JAMES HARDIE CEDARMILL SIDING 7.25" X 144" 6" EXPOSURE MANUFACTURER: JAMES HARDIE COMPANY

MATERIAL AND FINISH SCHEDULE	
SEE SHEET A630 FOR ADDITIONAL DETAIL ON MATERIALS	
15	HARIDE PLANK SIDING (F) HARDIE SIDING 'MIDNIGHT SOOT' JAMES HARDIE CEDARMILL SIDING 7.25" X 144" 6" EXPOSURE MANUFACTURER: JAMES HARDIE COMPANY
16	FDC
17	FIRE RISER ROOM/FIRE CONTROL ROOM
18	STEEL C CHANNEL (PT-02) (D) PT-02 SHERWIN WILLIAMS 7061 'NIGHT OWL' SHERWIN WILLIAMS Pro Industrial Pro-Cryl Universal Primer with two coats of Pro Industrial Multi-Surface Acrylic Gloss
19	GLUELAM WOOD BEAM (E)
20	TREX CLADDING (G) TREX TRANSCEND 'TIKI TORCH' 5.5" PLANK MANUFACTURER: TREX COMPANY, INC.
22	BAR WITH TILE BAR DIE WALL
23	PLATE STEEL SADDLE STRAP (PT-02) (D) PT-02 SHERWIN WILLIAMS 7061 'NIGHT OWL' SHERWIN WILLIAMS Pro Industrial Pro-Cryl Universal Primer with two coats of Pro Industrial Multi-Surface Acrylic Gloss
25	HOLLOW METAL DOOR (PAINTED PT-01) (H) PT-01 SHERWIN WILLIAMS 9161 'DUSTBLU' SHERWIN WILLIAMS Pro Industrial Pro-Cryl Universal Primer with two coats of Pro Industrial Multi-Surface Acrylic Gloss
26	STEEL BEAM (PAINTED PT-02) (D) PT-02 SHERWIN WILLIAMS 7061 'NIGHT OWL' SHERWIN WILLIAMS Pro Industrial Pro-Cryl Universal Primer with two coats of Pro Industrial Multi-Surface Acrylic Gloss
27	MECHANICAL UNITS (BEYOND) SCREENED BY PARAPET
28	CRL GLASS BALUSTRADE SYSTEM
29	PLAZIT 'POLYGAL' 'ICE' CORRUGATED POLYCARBONATE ROOFING (K)
30	STEEL KNIFE EGDE PARAPET CAP PAINTED PT-02 (D) PT-02 SHERWIN WILLIAMS 7061 'NIGHT OWL' SHERWIN WILLIAMS Pro Industrial Pro-Cryl Universal Primer with two coats of Pro Industrial Multi-Surface Acrylic Gloss
31	WHITE TUMBLED REAL BRICK VENEER. (I) Sandy Shore by General Shale
32	BLACK TUMBLED REAL BRICK VENEER. (I) Sandy Shore by General Shale Painted gloss black.
33	STEEL GATES (PAINTED PT-02) (D) PT-02
34	CIP CONCRETE WALL AT SERVICE YARD

TRACKING #:
PLAN CHECK #:

CONSULTANTS:

CERTIFICATION:

PROGRESS DRAWINGS
NOT FOR CONSTRUCTION



ELECTRIC PICKLE ROSEVILLE

340 Conference Center Drive
Roseville, CA 95678
38.778866, -121.270030
Contact: Paul Frederick
12101 S. Crenshaw Blvd #400
Hawthorne, CA 90250
310.331.8232



2 MAIN BUILDING ELEVATION - WEST
1/8" = 1'-0"



1 PROJECT ELEVATION - EAST
1/8" = 1'-0"

THIS DRAWING IS PART OF A SET OF WORKING DRAWINGS. THE INFORMATION CONTAINED ON THIS DRAWING MUST BE COORDINATED WITH THE BALANCE OF THE DRAWINGS, AND CANNOT BE TAKEN AS A STAND-ALONE INSTRUCTION. ALL GENERAL NOTES AND SPECIFICATIONS APPLY TO EVERY SHEET IN THIS SET.

Date	2023/06/18	Project No.	10503
Drawn By	MAR	Checked By	JED
Revision		Date	
DR Comments	01		8/18/23

A252

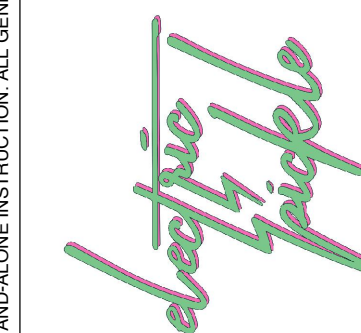
COLORED BUILDING ELEVATIONS



CONSULTANTS:

CERTIFICATION:

**PROGRESS DRAWINGS
NOT FOR CONSTRUCTION**



ELECTRIC PICKLE ROSEVILLE

340 Conference Center Drive
Roseville, CA 95767
38.778866, -121.271030
Contact: Paul Frederick
12101 S. Crenshaw Blvd #400
Hawthorne, CA 90250
310.331.8232

2023/06/18
10503

MAR
JED

Date: 2023/06/18
Project No: 10503
Drawn By: MAR
Checked By: JED

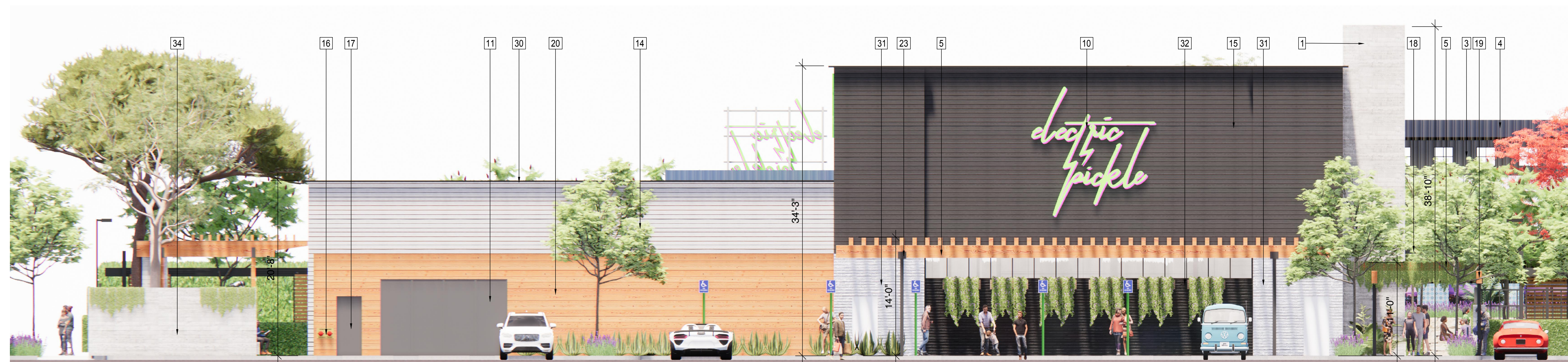
Revision Date
DR Comments 01 8/18/23

A253

COLORED BUILDING ELEVATIONS

MATERIAL AND FINISH SCHEDULE	
SEE SHEET A630 FOR ADDITIONAL DETAIL ON MATERIALS	
1	BOARD-FORMED CONCRETE (C)
2	STANDING SEAM METAL (DARK BRONZE) (A) WESTERN WAVE METAL RIGID WALL PANEL 'DARK BRONZE' 24 GA. MANUFACTURER: WESTERN STATES METAL ROOFING
3	STANDING SEAM METAL (SLATE GRAY) (B) WESTERN WAVE METAL RIGID WALL PANEL 'SLATE GRAY' 24 GA. MANUFACTURER: WESTERN STATES METAL ROOFING
4	STANDING SEAM METAL ROOF (B) WESTERN WAVE METAL RIGID ROOFING 'SLATE GRAY' 24 GA. MANUFACTURER: WESTERN STATES METAL ROOFING
5	GLUELAM WOOD SHADE TRELLIS (E)
6	8'-0" HIGH WROUGHT-IRON FENCE PAINTED PT-02 (D) PT-02 SHERWIN WILLIAMS 7061 'NIGHT OWL' SHERWIN WILLIAMS Pro Industrial Pro-Cryl Universal Primer with two coats of Pro Industrial Multi-Surface Acrylic Gloss
7	STEEL COLUMN (PAINTED PT-02) (D) PT-02 SHERWIN WILLIAMS 7061 'NIGHT OWL' SHERWIN WILLIAMS Pro Industrial Pro-Cryl Universal Primer with two coats of Pro Industrial Multi-Surface Acrylic Gloss
8	OPERABLE STORERFONT WINDOW SYSTEM. Western Windows dark bronze anodized with dual pane insulated high performance glass.
9	CIP WALL AT OUTDOOR STAGE (C)
10	SIGNAGE (BY SEPARATE PERMIT)
11	SES (PAINTED PT-01) (H) PT-01 SHERWIN WILLIAMS 9161 'DUSTBLU' SHERWIN WILLIAMS Pro Industrial Pro-Cryl Universal Primer with two coats of Pro Industrial Multi-Surface Acrylic Gloss
12	CABANA BUILDING (SEE ELEVATIONS)
13	FIXED STORERFONT WINDOW SYSTEM. Western Windows dark bronze anodized with dual pane insulated high performance glass.
14	HARIDE PLANK SIDING (J) HARDIE SIDING 'PEARL GRAY' JAMES HARDIE CEDARMILL SIDING 7.25" X 144" 6" EXPOSURE MANUFACTURER: JAMES HARDIE COMPANY

MATERIAL AND FINISH SCHEDULE	
SEE SHEET A630 FOR ADDITIONAL DETAIL ON MATERIALS	
15	HARIDE PLANK SIDING (F) HARDIE SIDING 'MIDNIGHT SOOT' JAMES HARDIE CEDARMILL SIDING 7.25" X 144" 6" EXPOSURE MANUFACTURER: JAMES HARDIE COMPANY
16	FDC
17	FIRE RISER ROOM/FIRE CONTROL ROOM
18	STEEL C CHANNEL (PT-02) (D) PT-02 SHERWIN WILLIAMS 7061 'NIGHT OWL' SHERWIN WILLIAMS Pro Industrial Pro-Cryl Universal Primer with two coats of Pro Industrial Multi-Surface Acrylic Gloss
19	GLUELAM WOOD BEAM (E)
20	TREX CLADDING (G) TREX TRANSCEND IN 'TIKI TORCH' 5.5" PLANK MANUFACTURER: TREX COMPANY, INC.
22	BAR WITH TILE BAR DIE WALL
23	PLATE STEEL SADDLE STRAP (PT-02) (D) PT-02 SHERWIN WILLIAMS 7061 'NIGHT OWL' SHERWIN WILLIAMS Pro Industrial Pro-Cryl Universal Primer with two coats of Pro Industrial Multi-Surface Acrylic Gloss
25	HOLLOW METAL DOOR (PAINTED PT-01) (H) PT-01 SHERWIN WILLIAMS 9161 'DUSTBLU' SHERWIN WILLIAMS Pro Industrial Pro-Cryl Universal Primer with two coats of Pro Industrial Multi-Surface Acrylic Gloss
26	STEEL BEAM (PAINTED PT-02) (D) PT-02 SHERWIN WILLIAMS 7061 'NIGHT OWL' SHERWIN WILLIAMS Pro Industrial Pro-Cryl Universal Primer with two coats of Pro Industrial Multi-Surface Acrylic Gloss
27	MECHANICAL UNITS (BEYOND) SCREENED BY PARAPET
28	CRL GLASS BALUSTRADE SYSTEM
29	PLAZIT 'POLY GAL' 'ICE' CORRUGATED POLYCARBONATE ROOFING (K)
30	STEEL KNIFE EDGE PARAPET CAP PAINTED PT-02 (D) PT-02 SHERWIN WILLIAMS 7061 'NIGHT OWL' SHERWIN WILLIAMS Pro Industrial Pro-Cryl Universal Primer with two coats of Pro Industrial Multi-Surface Acrylic Gloss
31	WHITE TUMBLED REAL BRICK VENEER. (I) Sandy Shore by General Shale
32	BLACK TUMBLED REAL BRICK VENEER. (I) Sandy Shore by General Shale Painted gloss black.
33	STEEL GATES (PAINTED PT-02) (D) PT-02
34	CIP CONCRETE WALL AT SERVICE YARD



2 PROJECT ELEVATION - PARTIAL - SOUTH
1/8" = 1'-0"



1 PROJECT ELEVATION - PARTIAL - SOUTH
1/8" = 1'-0"

THIS DRAWING IS PART OF A SET OF WORKING DRAWINGS. THE INFORMATION CONTAINED ON THIS DRAWING MUST BE COORDINATED WITH THE BALANCE OF THE DRAWINGS, AND CANNOT BE TAKEN AS A STAND-ALONE INSTRUCTION. ALL GENERAL NOTES AND SPECIFICATIONS APPLY TO EVERY SHEET IN THIS SET.

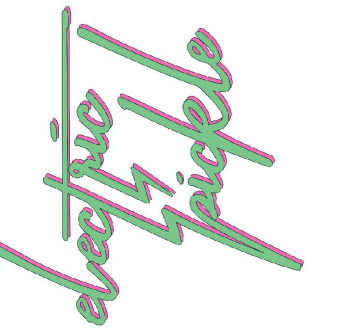
TRACKING #: PLAN CHECK #:



CONSULTANTS:

CERTIFICATION:

**PROGRESS DRAWINGS
NOT FOR CONSTRUCTION**



ELECTRIC PICKLE ROSEVILLE

340 Conference Center Drive
Roseville, CA 95678
38778866 - 12127030
Contact: Paul Frederick
12101 S. Crenshaw Blvd #400
Hawthorne, CA 90250
paul@electricpickle.com
310-331-8232

Date: 2023/06/18
Project No: 10503

Drawn By: MMR
Checked By: JED

Revision: DR Comments 01
Date: 8/18/23

A253.1

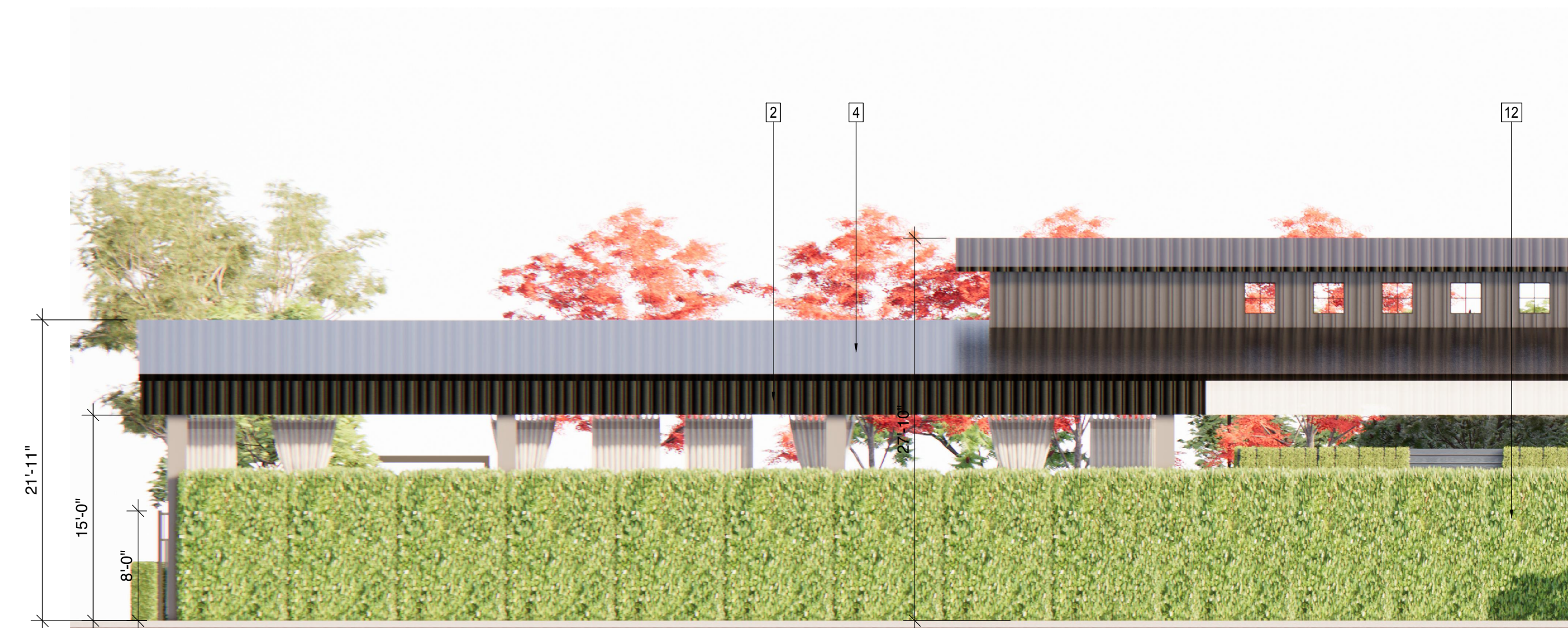
COLORED BUILDING ELEVATIONS

MATERIAL AND FINISH SCHEDULE	
SEE SHEET A630 FOR ADDITIONAL DETAIL ON MATERIALS	
1	BOARD-FORMED CONCRETE (C)
2	STANDING SEAM METAL (DARK BRONZE) (A) WESTERN WAVE METAL RIGID WALL PANEL 'DARK BRONZE' 24 GA. MANUFACTURER: WESTERN STATES METAL ROOFING
3	STANDING SEAM METAL (SLATE GRAY) (B) WESTERN WAVE METAL RIGID WALL PANEL 'SLATE GRAY' 24 GA. MANUFACTURER: WESTERN STATES METAL ROOFING
4	STANDING SEAM METAL ROOF (B) WESTERN WAVE METAL RIGID ROOFING 'SLATE GRAY' 24 GA. MANUFACTURER: WESTERN STATES METAL ROOFING
5	GLUELAM WOOD SHADE TRELLIS (E)
6	8'-0" HIGH WROUGHT-IRON FENCE PAINTED PT-02 (D) PT-02 SHERWIN WILLIAMS 7061 'NIGHT OWL' SHERWIN WILLIAMS Pro Industrial Pro-Cryl Universal Primer with two coats of Pro Industrial Multi-Surface Acrylic Gloss
7	STEEL COLUMN (PAINTED PT-02) (D) PT-02 SHERWIN WILLIAMS 7061 'NIGHT OWL' SHERWIN WILLIAMS Pro Industrial Pro-Cryl Universal Primer with two coats of Pro Industrial Multi-Surface Acrylic Gloss
8	OPERABLE STORERFONT WINDOW SYSTEM. Western Windows dark bronze anodized with dual pane insulated high performance glass.
9	CIP WALL AT OUTDOOR STAGE (C)
10	SIGNAGE (BY SEPARATE PERMIT)
11	SES (PAINTED PT-01) (H) PT-01 SHERWIN WILLIAMS 9161 'DUSTBLU' SHERWIN WILLIAMS Pro Industrial Pro-Cryl Universal Primer with two coats of Pro Industrial Multi-Surface Acrylic Gloss
12	CABANA BUILDING (SEE ELEVATIONS)
13	FIXED STORERFONT WINDOW SYSTEM. Western Windows dark bronze anodized with dual pane insulated high performance glass.
14	HARIDE PLANK SIDING (J) HARDIE SIDING 'PEARL GRAY' JAMES HARDIE CEDARMILL SIDING 7.25" X 144" 6" EXPOSURE MANUFACTURER: JAMES HARDIE COMPANY

MATERIAL AND FINISH SCHEDULE	
SEE SHEET A630 FOR ADDITIONAL DETAIL ON MATERIALS	
15	HARIDE PLANK SIDING (F) HARDIE SIDING 'MIDNIGHT SCOT' JAMES HARDIE CEDARMILL SIDING 7.25" X 144" 6" EXPOSURE MANUFACTURER: JAMES HARDIE COMPANY
16	FDC
17	FIRE RISER ROOM
18	STEEL C CHANNEL (PT-02) (D) PT-02 SHERWIN WILLIAMS 7061 'NIGHT OWL' SHERWIN WILLIAMS Pro Industrial Pro-Cryl Universal Primer with two coats of Pro Industrial Multi-Surface Acrylic Gloss
19	GLUELAM WOOD BEAM (E)
20	TREX CLADDING (G) TREX TRANSCEND IN 'TIKI TORCH' 5.5" PLANK MANUFACTURER: TREX COMPANY, INC.
22	BAR WITH TILE BAR DIE WALL
23	PLATE STEEL SADDLE STRAP (PT-02) (D) PT-02 SHERWIN WILLIAMS 7061 'NIGHT OWL' SHERWIN WILLIAMS Pro Industrial Pro-Cryl Universal Primer with two coats of Pro Industrial Multi-Surface Acrylic Gloss
25	HOLLOW METAL DOOR (PAINTED PT-01) (H) PT-01 SHERWIN WILLIAMS 9161 'DUSTBLU' SHERWIN WILLIAMS Pro Industrial Pro-Cryl Universal Primer with two coats of Pro Industrial Multi-Surface Acrylic Gloss
26	STEEL BEAM (PAINTED PT-02) (D) PT-02 SHERWIN WILLIAMS 7061 'NIGHT OWL' SHERWIN WILLIAMS Pro Industrial Pro-Cryl Universal Primer with two coats of Pro Industrial Multi-Surface Acrylic Gloss
27	MECHANICAL UNITS (BEYOND) SCREENED BY PARAPET
28	CRL GLASS BALUSTRADE SYSTEM
29	PLAZIT 'POLY GAL' 'ICE' CORRUGATED POLYCARBONATE ROOFING (K)
30	STEEL KNIFE EGDE PARAPET CAP PAINTED PT-02 (D) PT-02 SHERWIN WILLIAMS 7061 'NIGHT OWL' SHERWIN WILLIAMS Pro Industrial Pro-Cryl Universal Primer with two coats of Pro Industrial Multi-Surface Acrylic Gloss
31	WHITE TUMBLER REAL BRICK VENEER. (I) Sandy Shore by General Shale
32	BLACK TUMBLER REAL BRICK VENEER. (I) Sandy Shore by General Shale Painted gloss black.



2 PROJECT ELEVATION - PARTIAL - NORTH
1/8" = 1'-0"

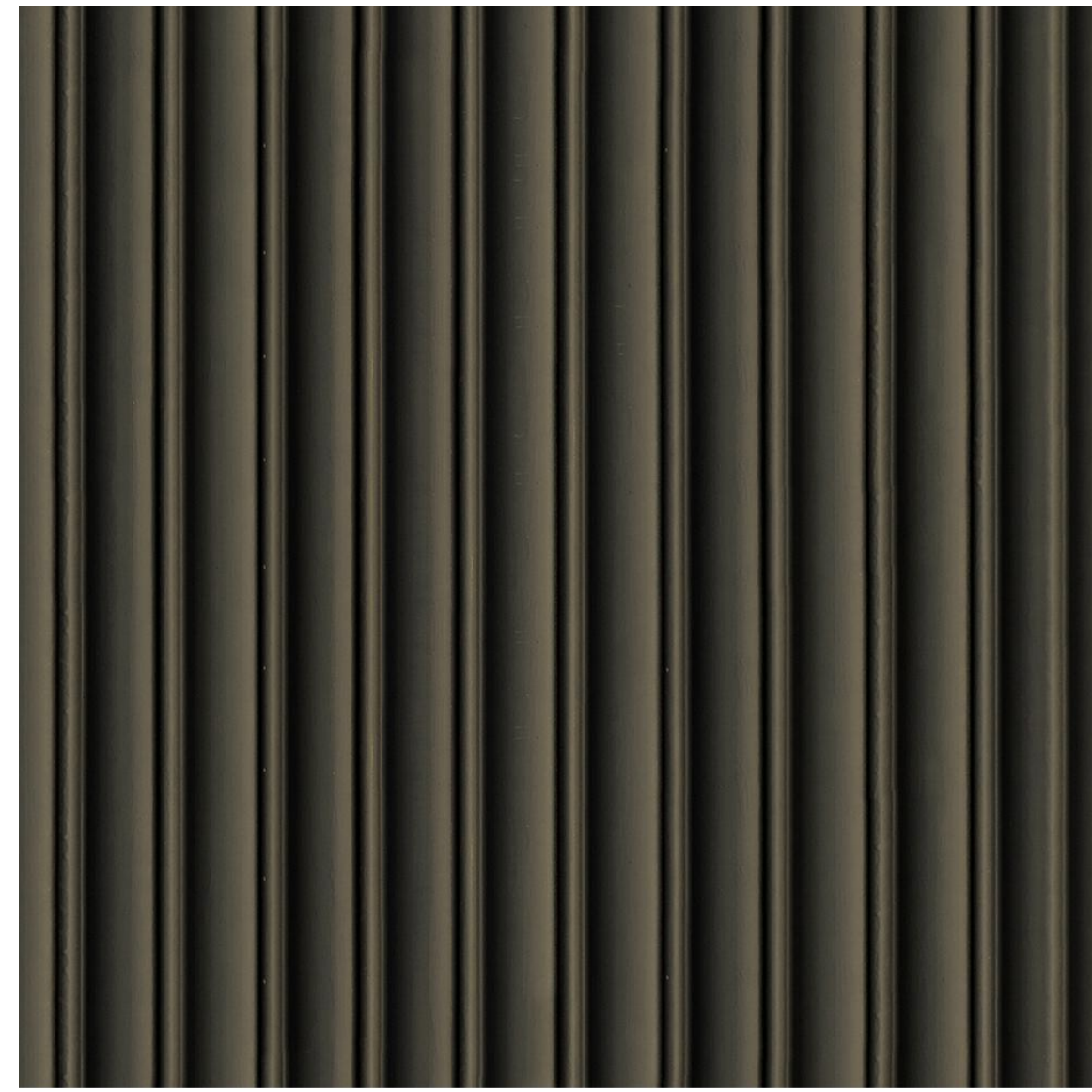


1 PROJECT ELEVATION - PARTIAL - NORTH
1/8" = 1'-0"

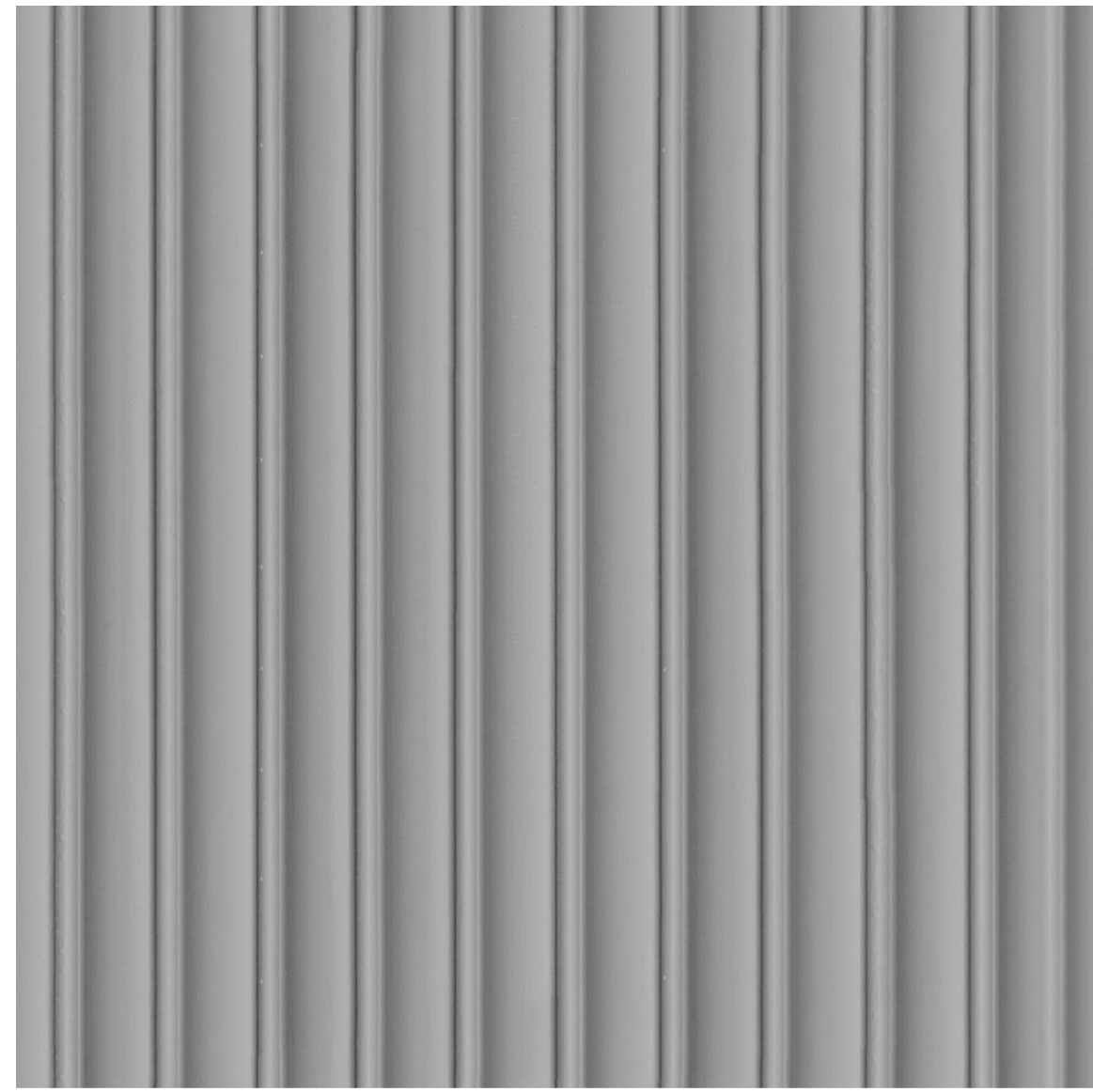
THIS DRAWING IS PART OF A SET OF WORKING DRAWINGS. THE INFORMATION CONTAINED ON THIS DRAWING MUST BE COORDINATED WITH THE BALANCE OF THE DRAWINGS, AND CANNOT BE TAKEN AS A STAND-ALONE INSTRUCTION. ALL GENERAL NOTES AND SPECIFICATIONS APPLY TO EVERY SHEET IN THIS SET.

TRACKING #: PLAN CHECK #:





A **STANDING SEAM METAL WALL PANEL**
EXTERIOR WALLS - MAIN BUILDING AND CABANA BUILDING
WESTERN WAVE METAL RIGID WALL PANEL
'DARK BRONZE' 24 Ga.
MANUFACTURER: WESTERN STATES METAL ROOFING



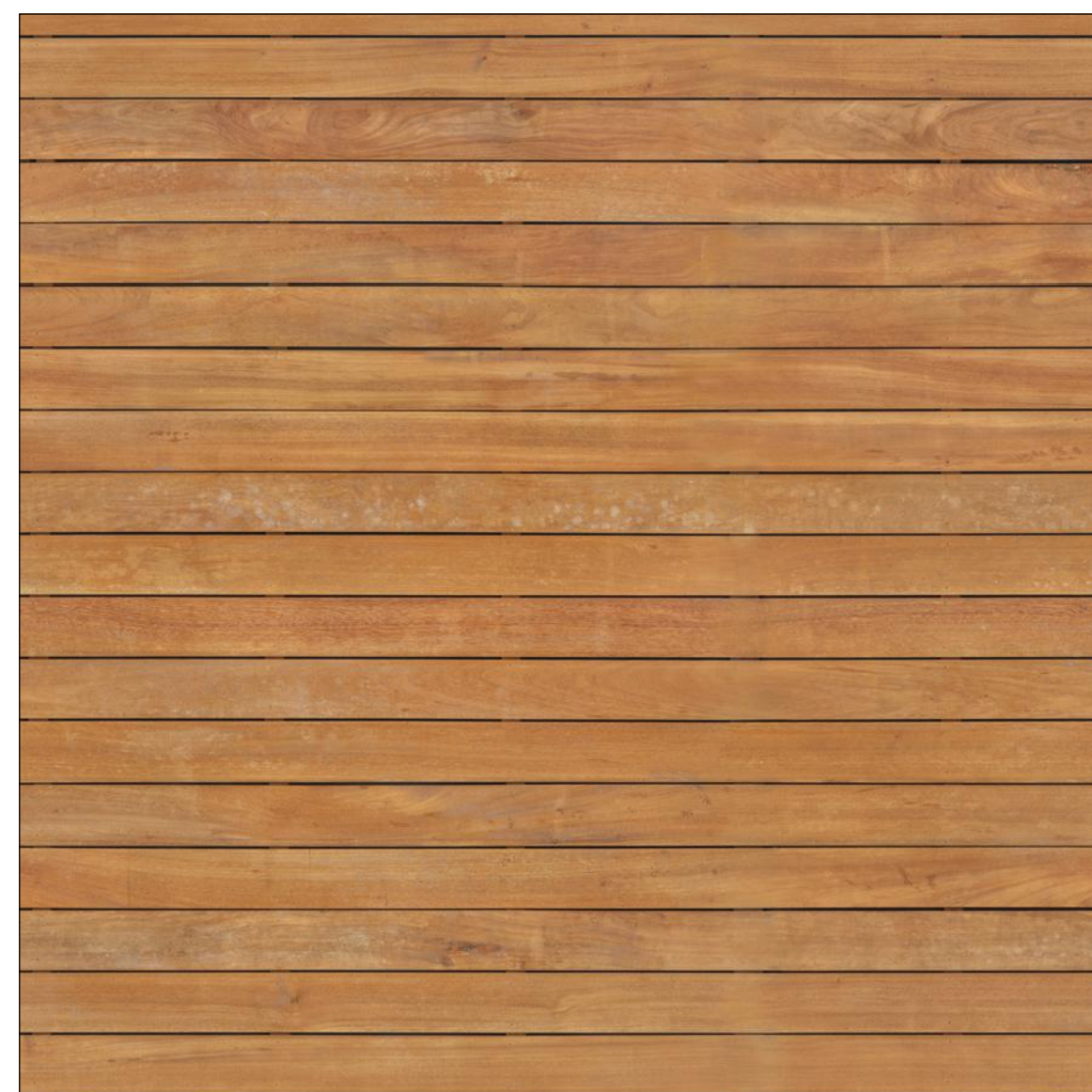
B **STANDING SEAM METAL ROOF/WALL**
PRIMARY EXTERIOR CLADDING - MAIN BUILDING
WESTERN WAVE METAL RIGID WALL PANEL
'SLATE GRAY' 24 Ga.
MANUFACTURER: WESTERN STATES METAL ROOFING



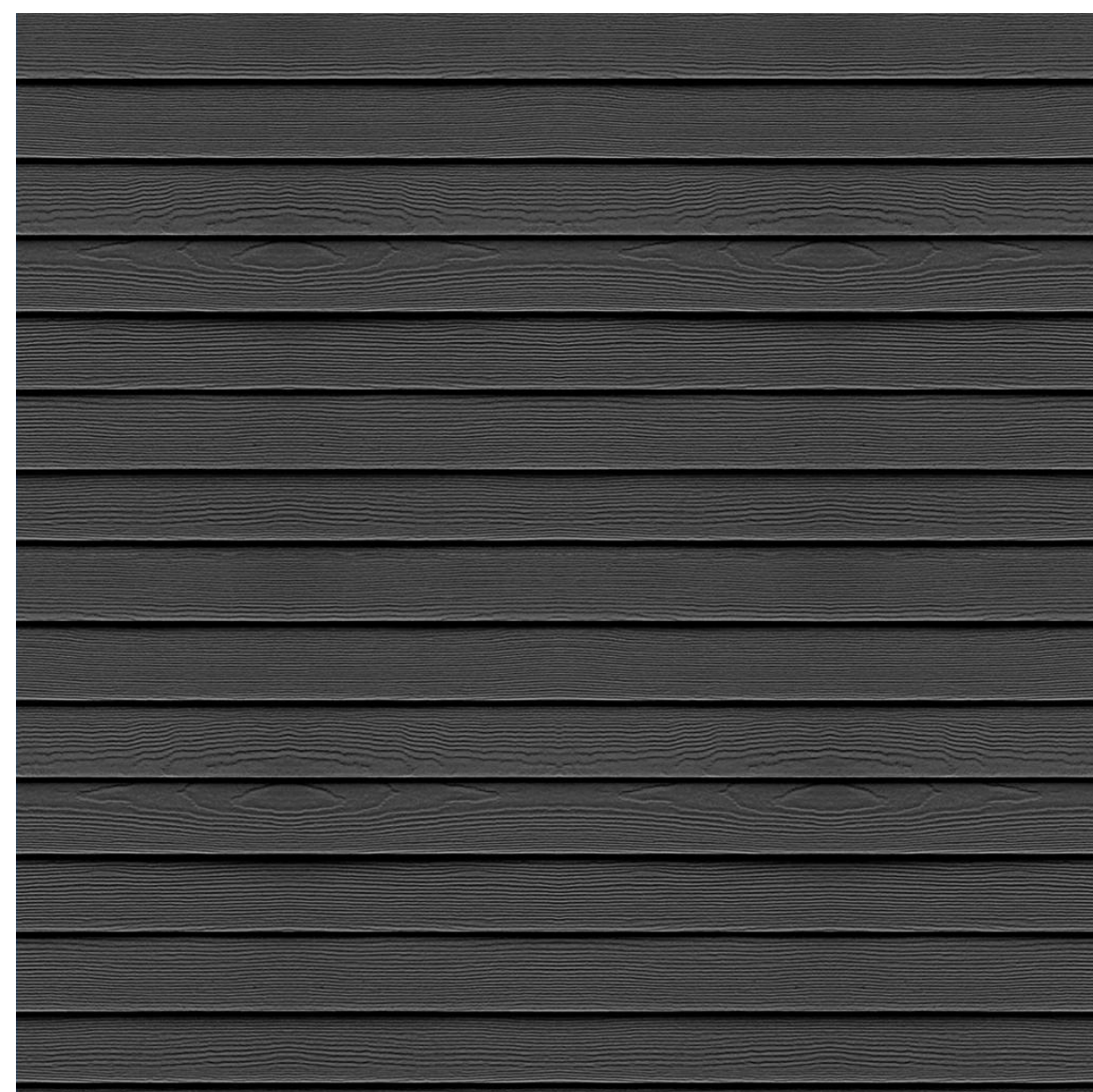
C **BOARD-FORMED CONCRETE**
BUILDING ACCENT MATERIAL, SITE WALLS
MANUFACTURER: BY GENERAL CONTRACTOR. MOCK-UP REQ'D



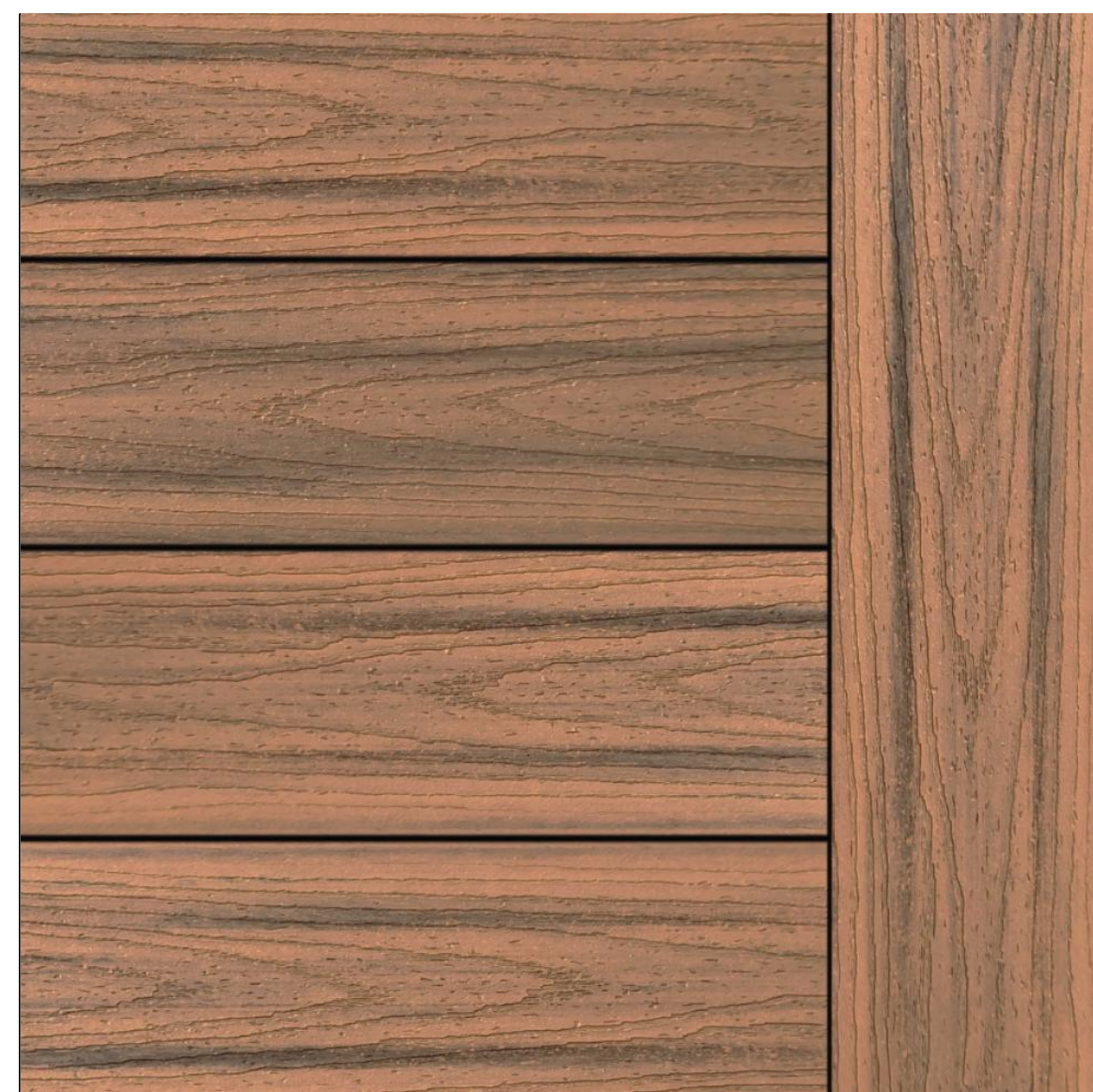
D **PT-02 SHERWIN WILLIAMS 7061 'NIGHT OWL'**
PAINT AT EXTERIOR STEEL FRAMES, METALS, FENCING
SHERWIN WILLIAMS Pro Industrial Pro-Cryl Universal Primer with two coats of Pro Industrial Multi-Surface Acrylic Gloss



E **GLUELAM WOOD BEAM**
TRELLISES AT MAIN BUILDING ENTRANCE



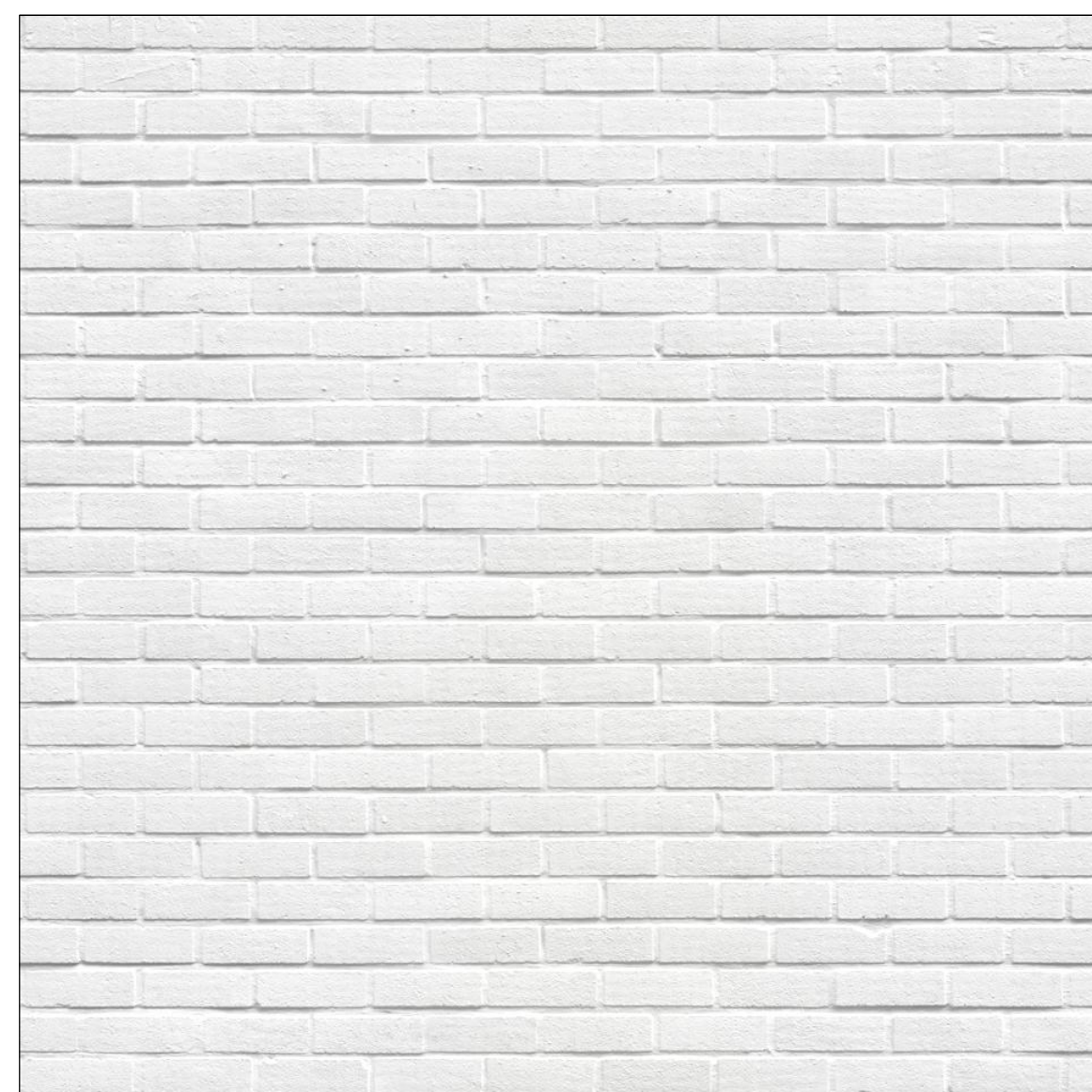
F **HARDIE SIDING 'MIDNIGHT SOOT'**
EXTERIOR BUILDING FIELD MATERIAL
JAMES HARDIE CEDARMILL SIDING 7.25" X 144"
6" EXPOSURE
MANUFACTURER: JAMES HARDIE COMPANY



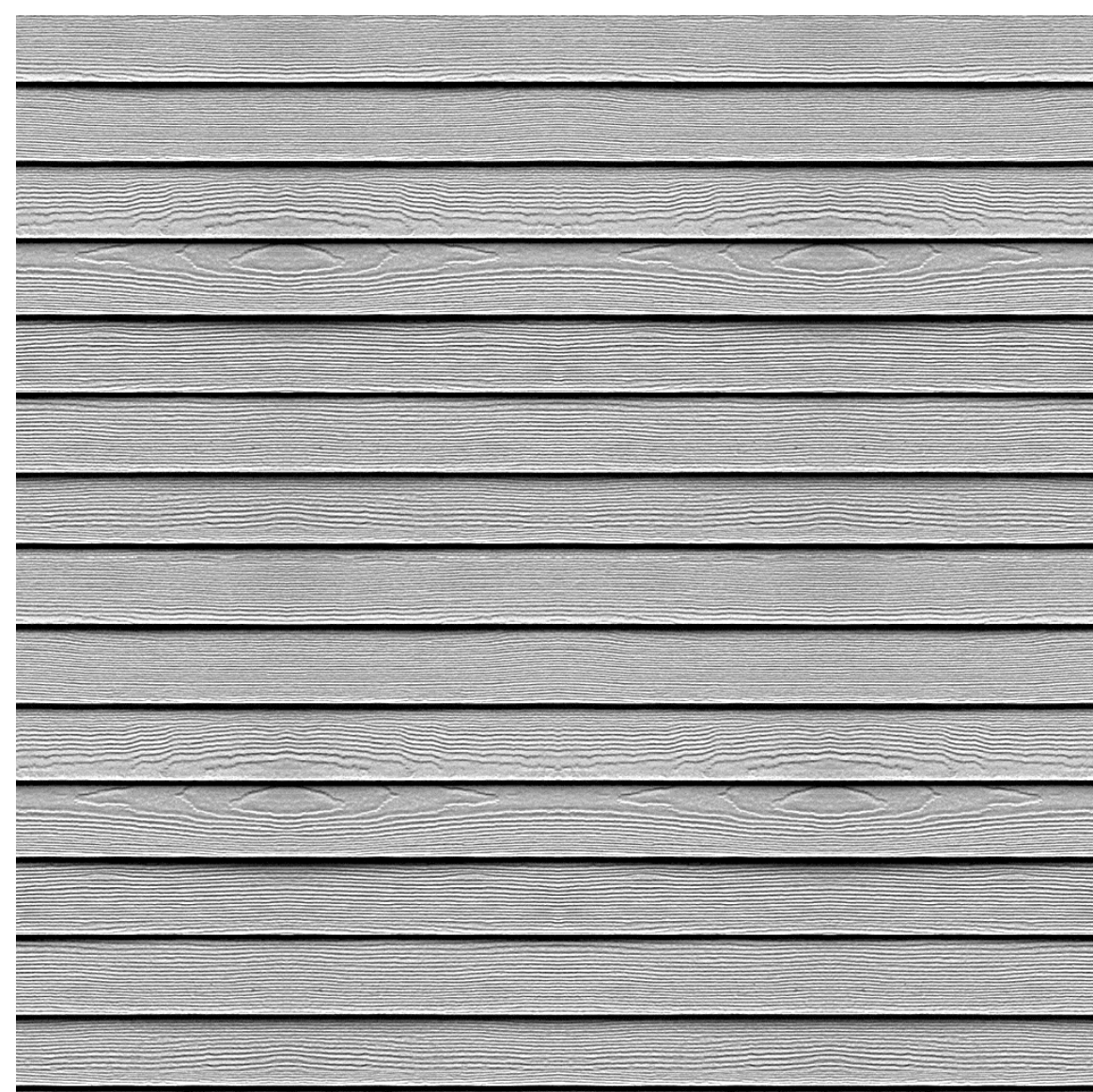
G **TIG EXTERIOR WOOD CLADDING**
MAIN BUILDING EXTERIOR CEILING AND WALL ACCENT-NORTH
TREX TRANSCEND IN 'TIKI TORCH' 5.5" PLANK
MANUFACTURER: TREX COMPANY, INC.



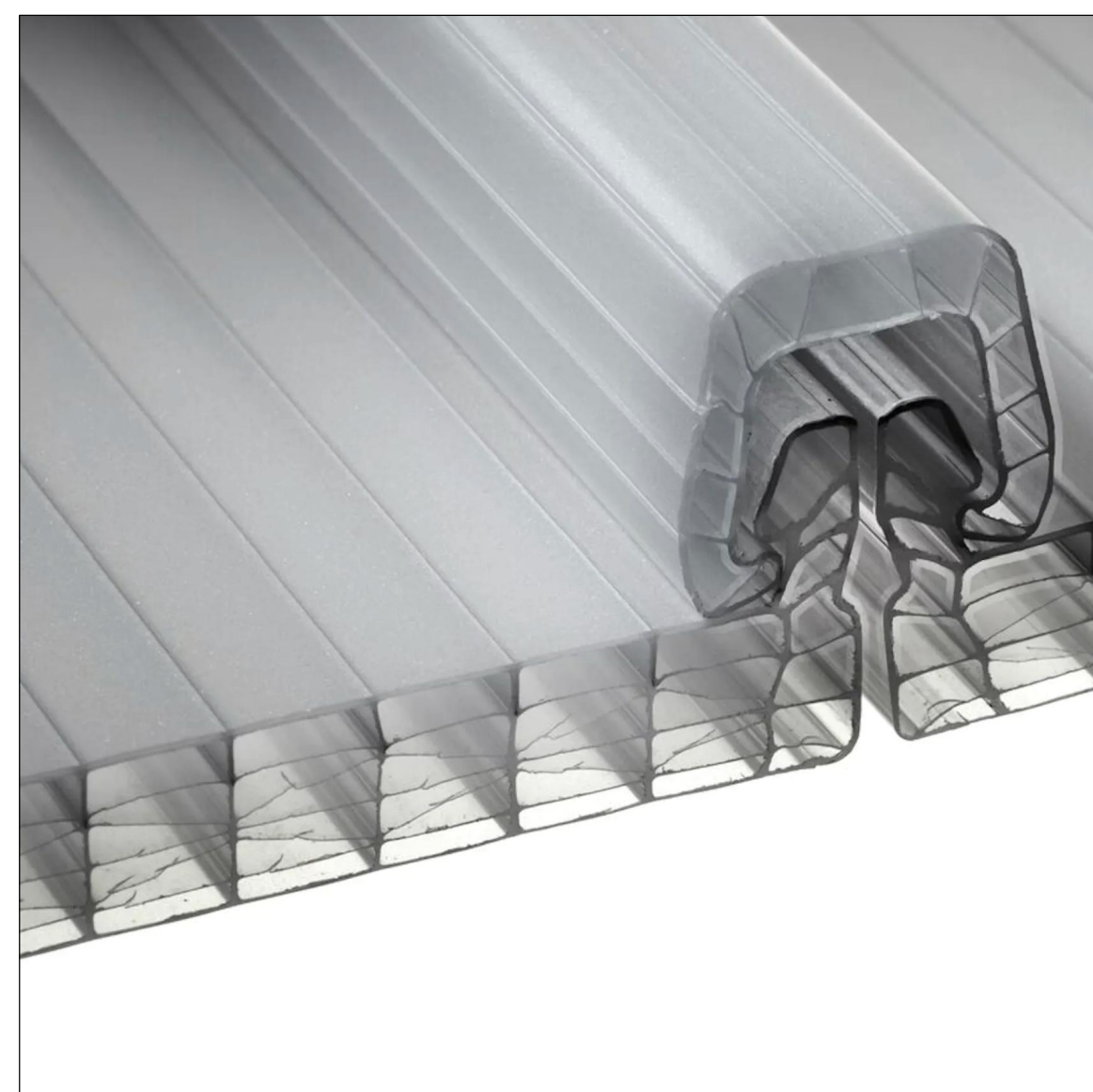
H **PT-01 SHERWIN WILLIAMS 9161 'DUSTBLU'**
PAINT AT SES DOORS AND FIRE RISER ROOM DOOR
SHERWIN WILLIAMS Pro Industrial Pro-Cryl Universal Primer with two coats of Pro Industrial Multi-Surface Acrylic Gloss



I **WHITE TUMBLED REAL BRICK VENEER**
EXTERIOR BUILDING ACCENT MATERIAL
SANDY SHORE - TUMBLED GEORGIA BRICK
2-3/4" H x 7-5/8" L x 2-5/8" D #6057032163
MANUFACTURER: GENERAL SHALE STONE



J **HARDIE SIDING 'PEARL GRAY'**
EXTERIOR BUILDING FIELD MATERIAL
JAMES HARDIE CEDARMILL SIDING 7.25" X 144"
6" EXPOSURE
MANUFACTURER: JAMES HARDIE COMPANY



K **TRANSLUCENT POLYCARBONATE ROOFING**
STANDING SEAM TRANSLUCENT ROOFING AT SHADE STRUCTURE
PLAZIT POLYGAL 'TOPGAL' IN 'ICE' FINISH
MANUFACTURER: PLAZIT POLYGAL



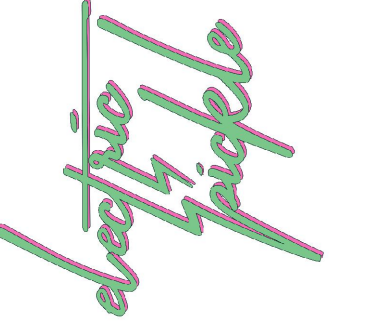
K **BLACK TUMBLED REAL BRICK VENEER**
EXTERIOR BUILDING ACCENT MATERIAL
SANDY SHORE - TUMBLED GEORGIA BRICK PAINTED BLACK GLOSS
2-3/4" H x 7-5/8" L x 2-5/8" D #6057032163
MANUFACTURER: GENERAL SHALE STONE

CONSULTANTS:

PLAN CHECK #:

CERTIFICATION:

PROGRESS DRAWINGS
NOT FOR CONSTRUCTION



ELECTRIC PICKLE ROSEVILLE

340 Conference Center Drive
Roseville, CA 95747
387-78866, Tel: 270030
Contact: Paul Frederick
12101 S. Crenshaw Blvd #400
Hawthorne, CA 90250
paul@electricpickle.com
310-331-8232

Date: 2023/08/18
Project No: 10503

Drawn By: MKR
Checked By: JED

Revision	Date
DR Comments 01	8/18/23

A630

FINISH SCHEDULE

THIS DRAWING IS PART OF A SET OF WORKING DRAWINGS. THE INFORMATION CONTAINED ON THIS DRAWING MUST BE COORDINATED WITH THE BALANCE OF THE DRAWINGS, AND CANNOT BE TAKEN AS A STAND-ALONE INSTRUCTION. ALL GENERAL NOTES AND SPECIFICATIONS APPLY TO EVERY SHEET IN THIS SET.





2 PERSPECTIVE AT FRONT (SOUTH)



1 PERSPECTIVE AT FRONT / ENTRY (SOUTH)

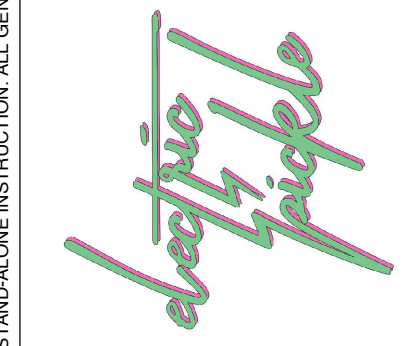
TRACKING #:
BRICK & WEST
DESIGN

CONSULTANTS:

PLAN CHECK #:

CERTIFICATION:

PROGRESS DRAWINGS
NOT FOR CONSTRUCTION



ELECTRIC PICKLE ROSEVILLE
340 Conference Center Drive
Roseville, CA 95678
38.778866, -121.270030
Contact: Paul Frederick
12101 S. Crenshaw Blvd. #400
Hawthorne, CA 90250
www.electricelectronics.com
310.331.8232

2023/08/18
10503
MWR
JED

Date: 2023/08/18
Project No: 10503
Drawn By: MWR
Checked By: JED

Revision	Date
DR Comments 01	8/18/23

A920

EXTERIOR PERSPECTIVES

*For additional information and project requirements and instructions visit www.brickandwest.com/build



THIS DRAWING IS PART OF A SET OF WORKING DRAWINGS. THE INFORMATION CONTAINED ON THIS DRAWING MUST BE COORDINATED WITH THE BALANCE OF THE DRAWINGS, AND CANNOT BE TAKEN AS A STAND-ALONE INSTRUCTION. ALL GENERAL NOTES AND SPECIFICATIONS APPLY TO EVERY SHEET IN THIS SET.



2 AERIAL PERSPECTIVE FROM EAST



1 PERSPECTIVE AT REAR (FROM MULTI-USE TRAIL) (NORTH)

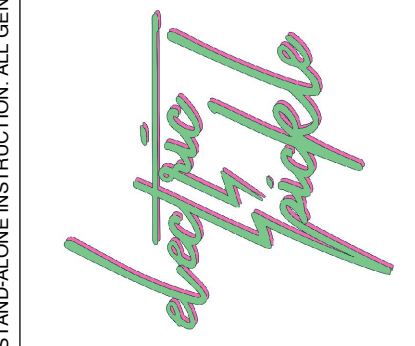
TRACKING #:
BRICK & WEST
DESIGN

CONSULTANTS:

PLAN CHECK #:

CERTIFICATION:

PROGRESS DRAWINGS
NOT FOR CONSTRUCTION



ELECTRIC PICKLE ROSEVILLE
340 Conference Center Drive
Roseville, CA 95742
38.778866, -121.270030

Contact: Paul Frederick
12101 S. Crenshaw Blvd. #400
Hawthorne, CA 90250
Paul.Frederick@electricpickle.com
310.331.8232

Date: 2023/08/18
Project No: 10503

Drawn By: MWR
Checked By: JED

Revision	Date
DR Comments 01	8/18/23

A921

EXTERIOR PERSPECTIVES

